



Inspiring
imperfections

The art of Wabi-Sabi by

AludecoR
Metal Composite Panel



侘寂

Wabi Sabi

The roots of Wabi-Sabi are in Zen Buddhism. 'Wabi' comes from the root "wa" which means harmony, peace, tranquility and balance. 'Sabi' stands for "the bloom of time." In essence, the philosophy celebrates elements that are weathered, worn or rusted.

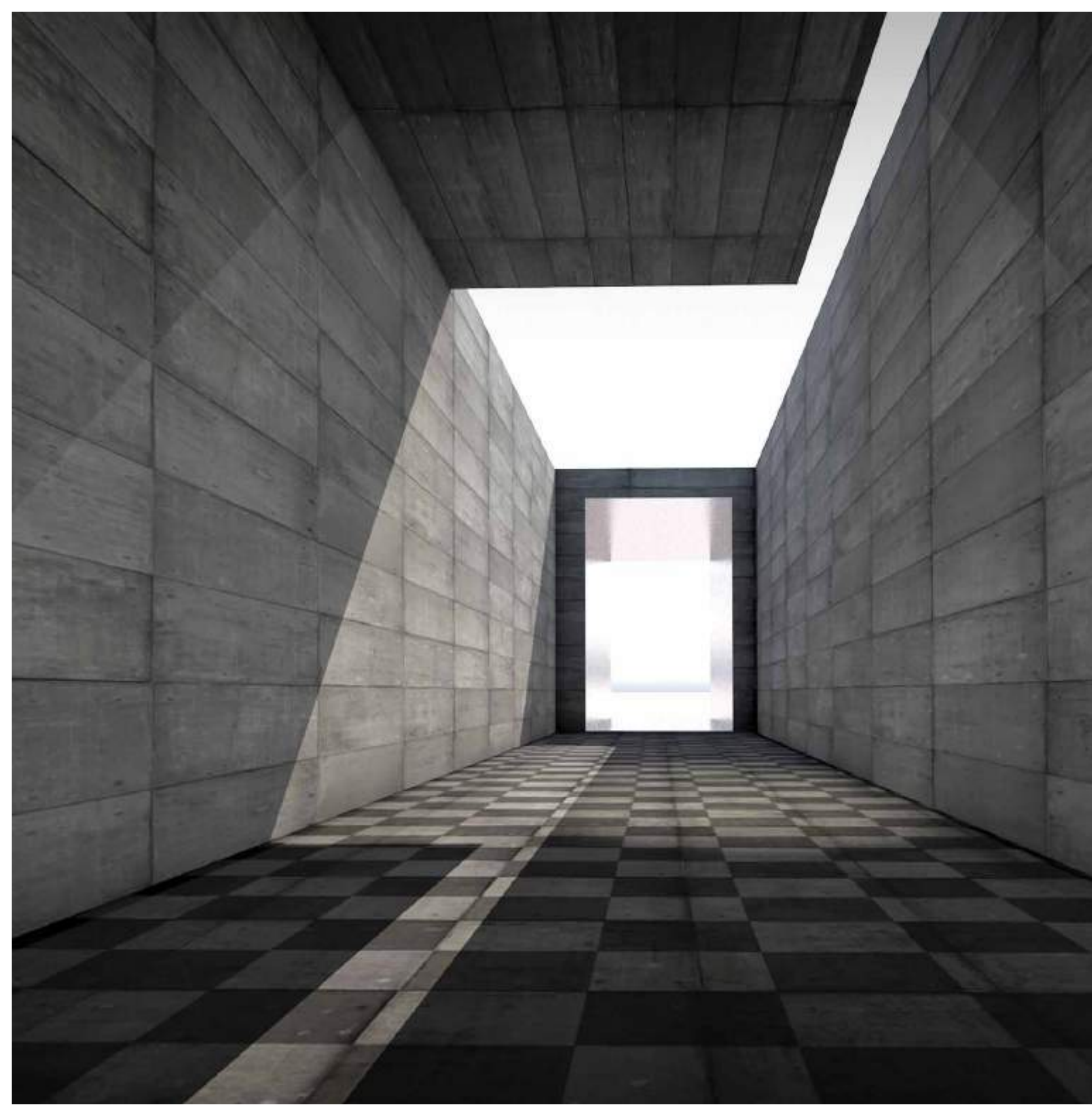
In the following pages we have attempted to reimagine spaces with a touch of Wabi-Sabi. Explore a range of textures and shades that showcase the passage of time, peel by peel and stain by stain.



Why choose Aludecor Wabi-Sabi

Everything fades with time. But is it possible to cease the moment in pieces of art? Aludecor's Wabi-Sabi MCPs are an attempt at just that.

The patterns and textures in this range are inspired from elements around the world. They are designed to offer an exquisite set which aims to showcase harmony and beauty in daily imperfections. Wabi-Sabi is rooted in modesty that is elegantly perceived.



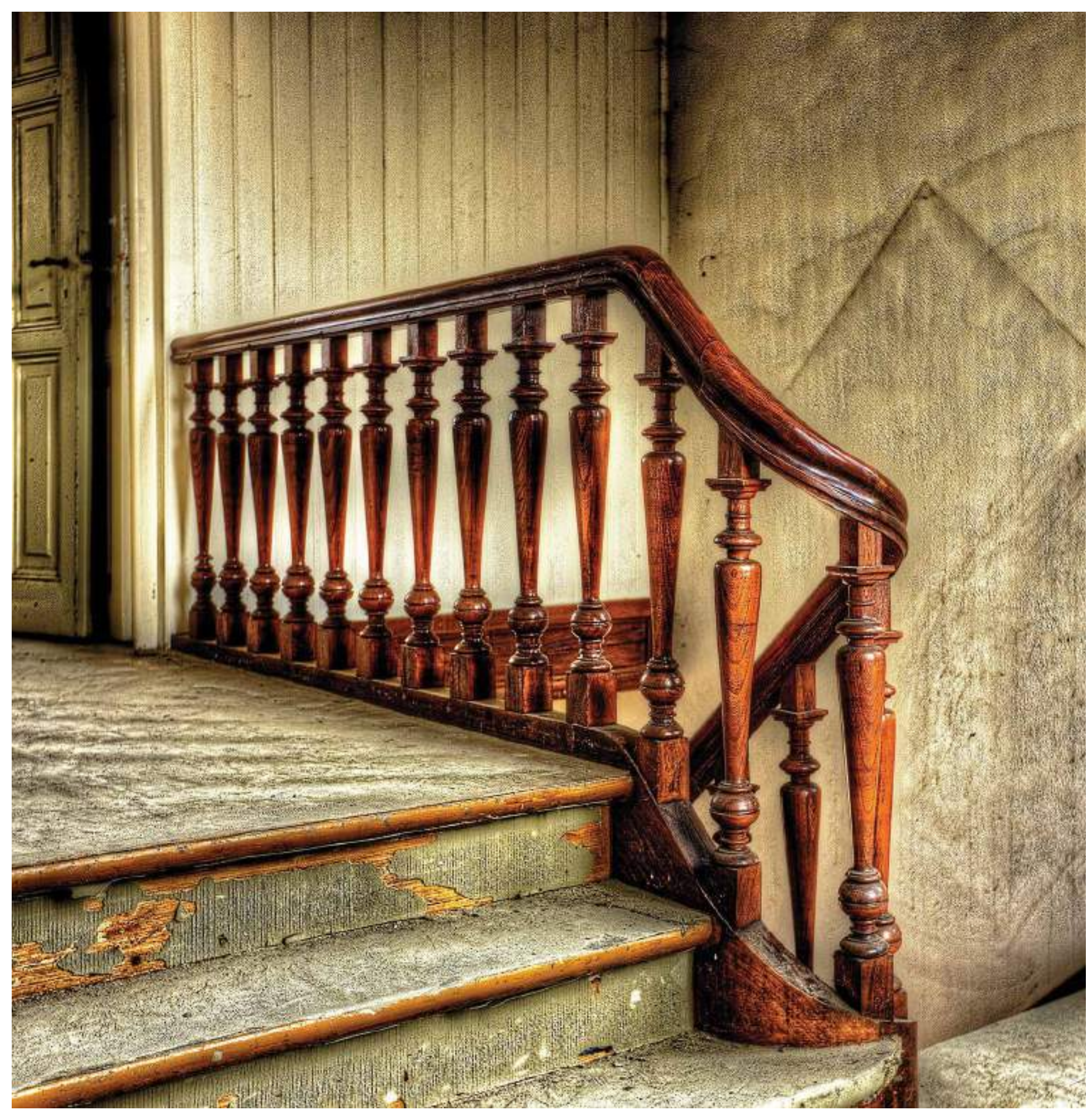
For brutally honest designs

For decades brutalist architecture was a symbol of the underclass. Today, however, brutalism is back in style.

London treats its brutalist buildings with care and respect.

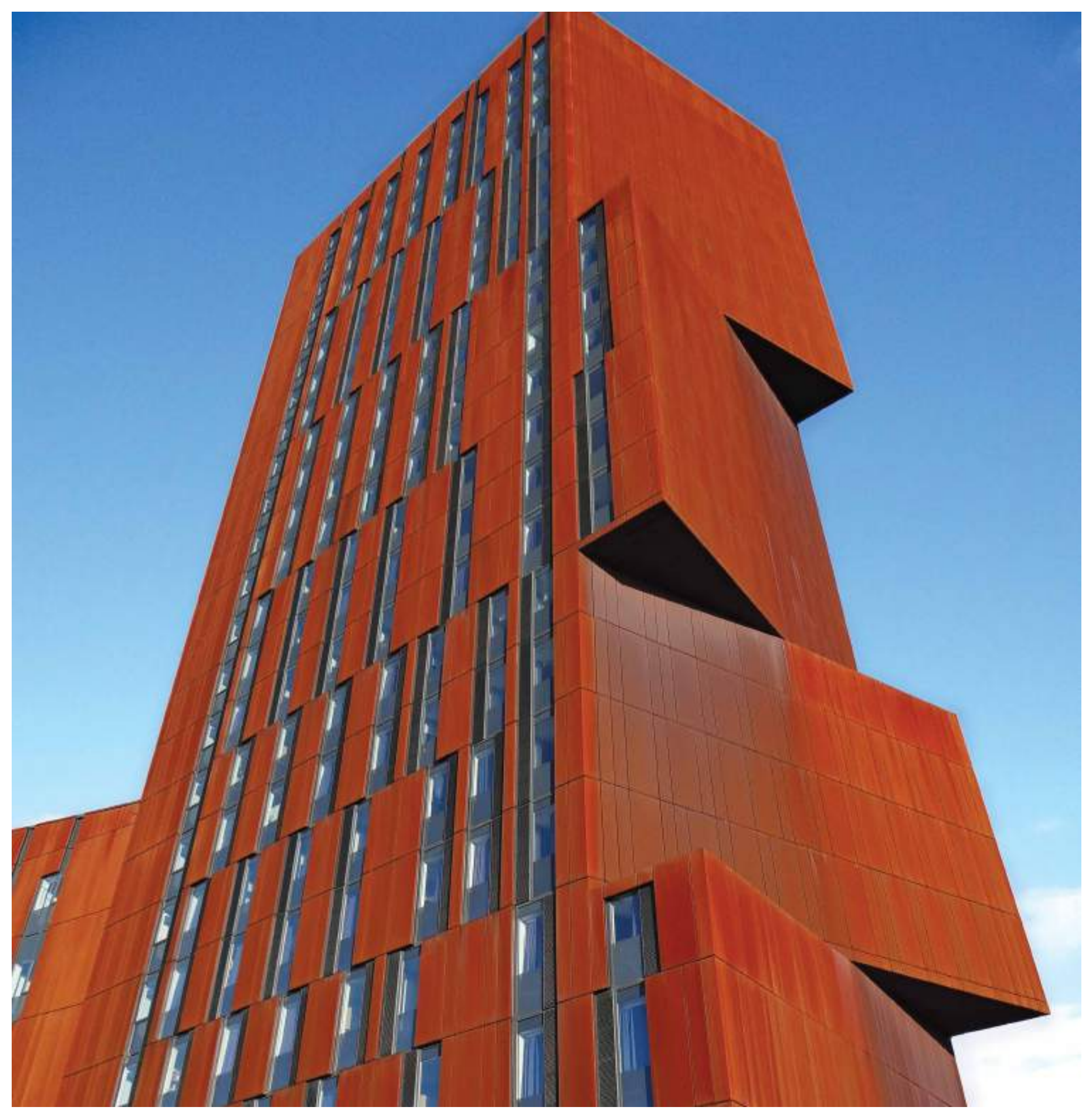
Is there a reason why other cities won't?

With dozens of these structures now listed as heritage buildings, it has become a haven for the concrete explorer.



Guerrilla is even more interesting

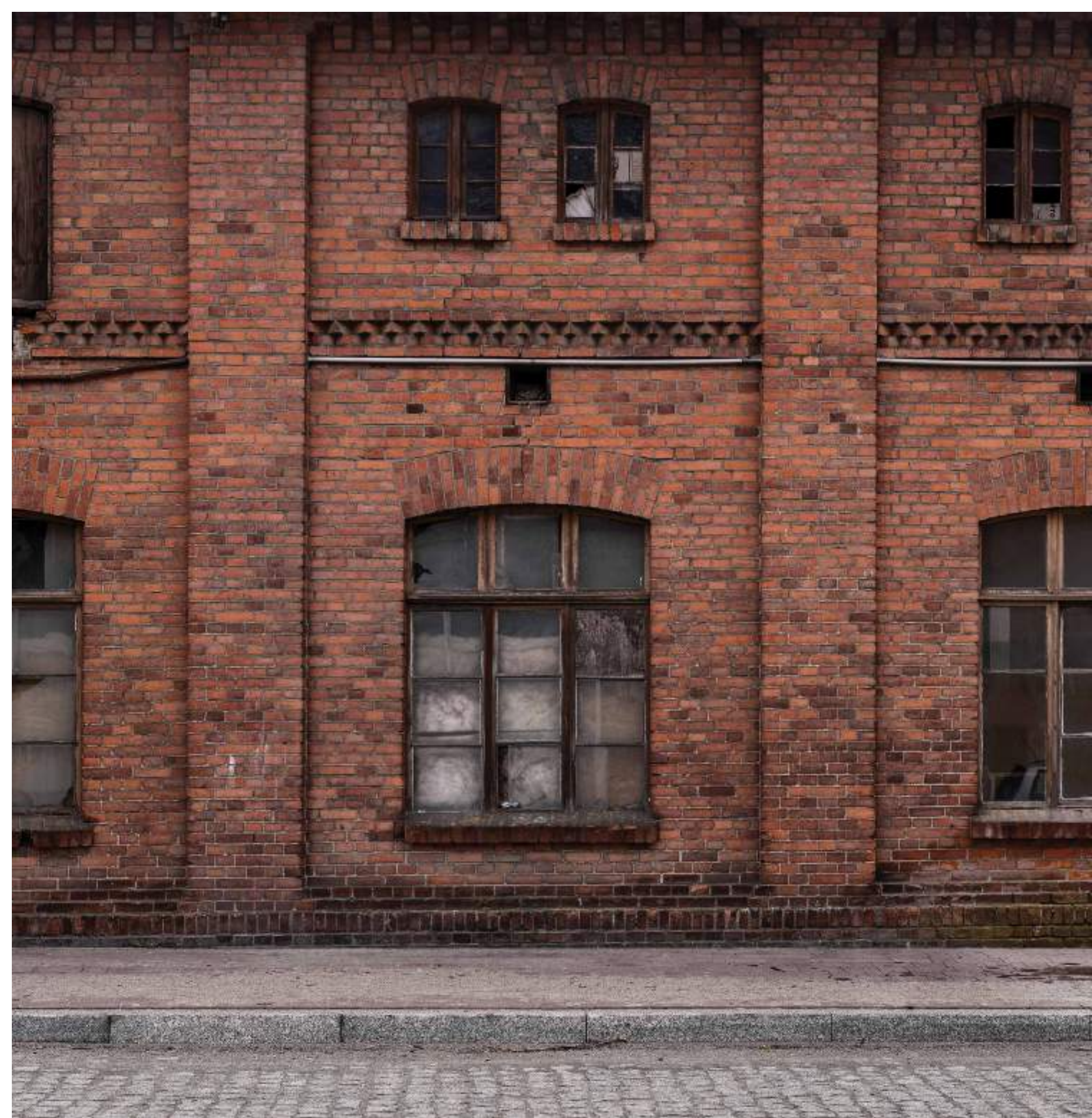
Guerrilla architecture is the hacking of existing buildings, often old, disused or distressed, for a new function. Students tired of waiting for sustainable transformation and disillusioned with the pace of change, hijack disused spaces to create socially responsible and sustainable designs. Such buildings, spaces, attachments and interventions are often characterised by their parasitic or alien nature.




It steals the show

For strength and distinctive colours, the Corten steel style of architecture has been noted by most architects worldwide. A kind of steel with a unique chemical composition, that provides oxidation which in turn protects the piece, without altering its mechanical characteristics. It also adds to the core strength of the structure and enriches aesthetics.

Aludecor Wabi-Sabi MCPs are inexpensive compared to steel and help achieve the look of Corten steel without any compromise.





Distressed is in

Making a piece of furniture or object appear aged and older, by giving it a weathered or 'distressed' look adds intrigue.

There are many methods to achieve this.

The aim is to attain a finish that is intentionally manipulated to look less than perfect. Sandpaper or paint strippers can be used for this. The final appearance is often called the patina.

With Wabi-Sabi this look can be achieved with minimal effort. Just choose the right shade to make your creation stand out!



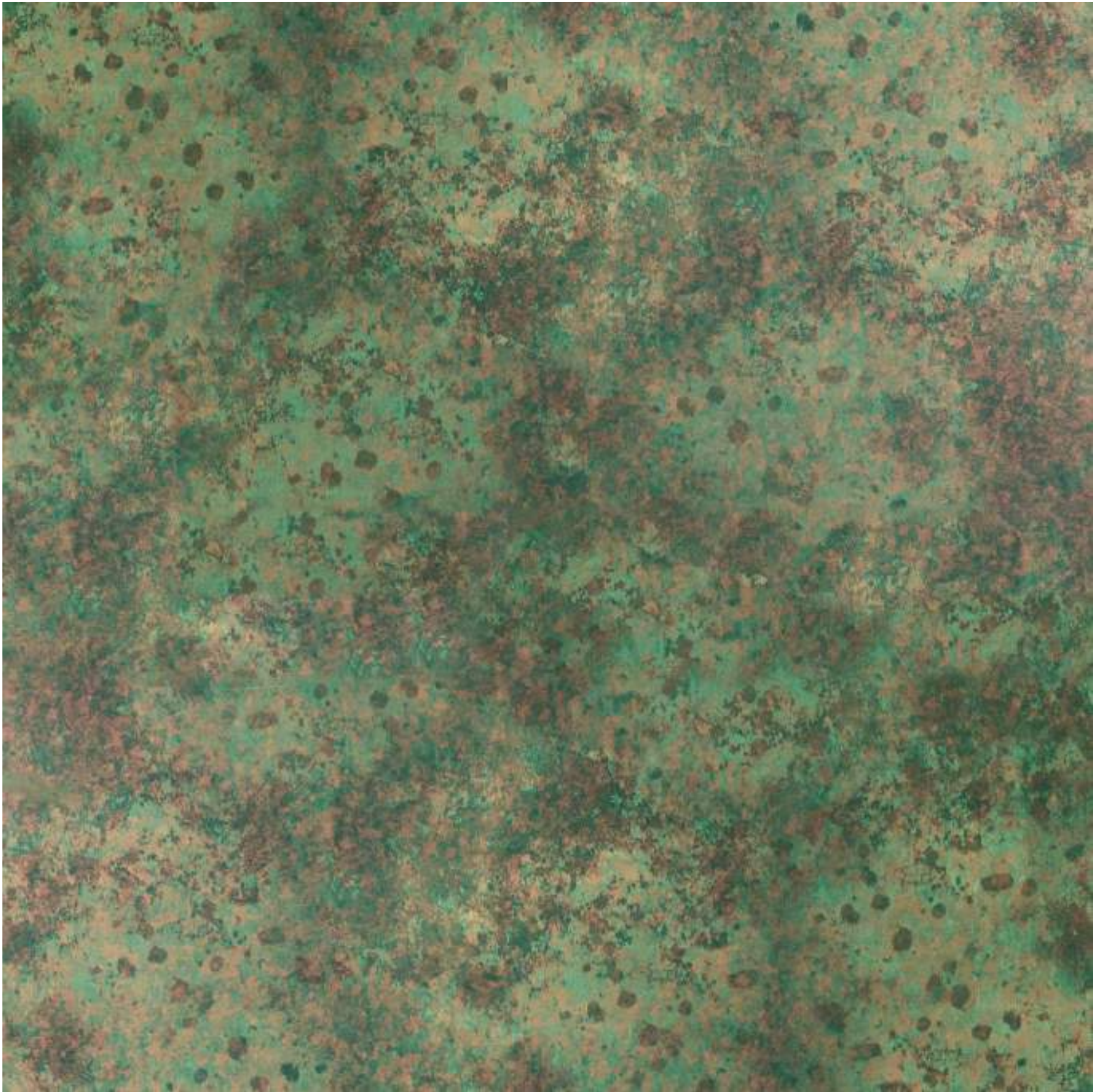
CS-01 | Patina Copper | Guerilla Collection



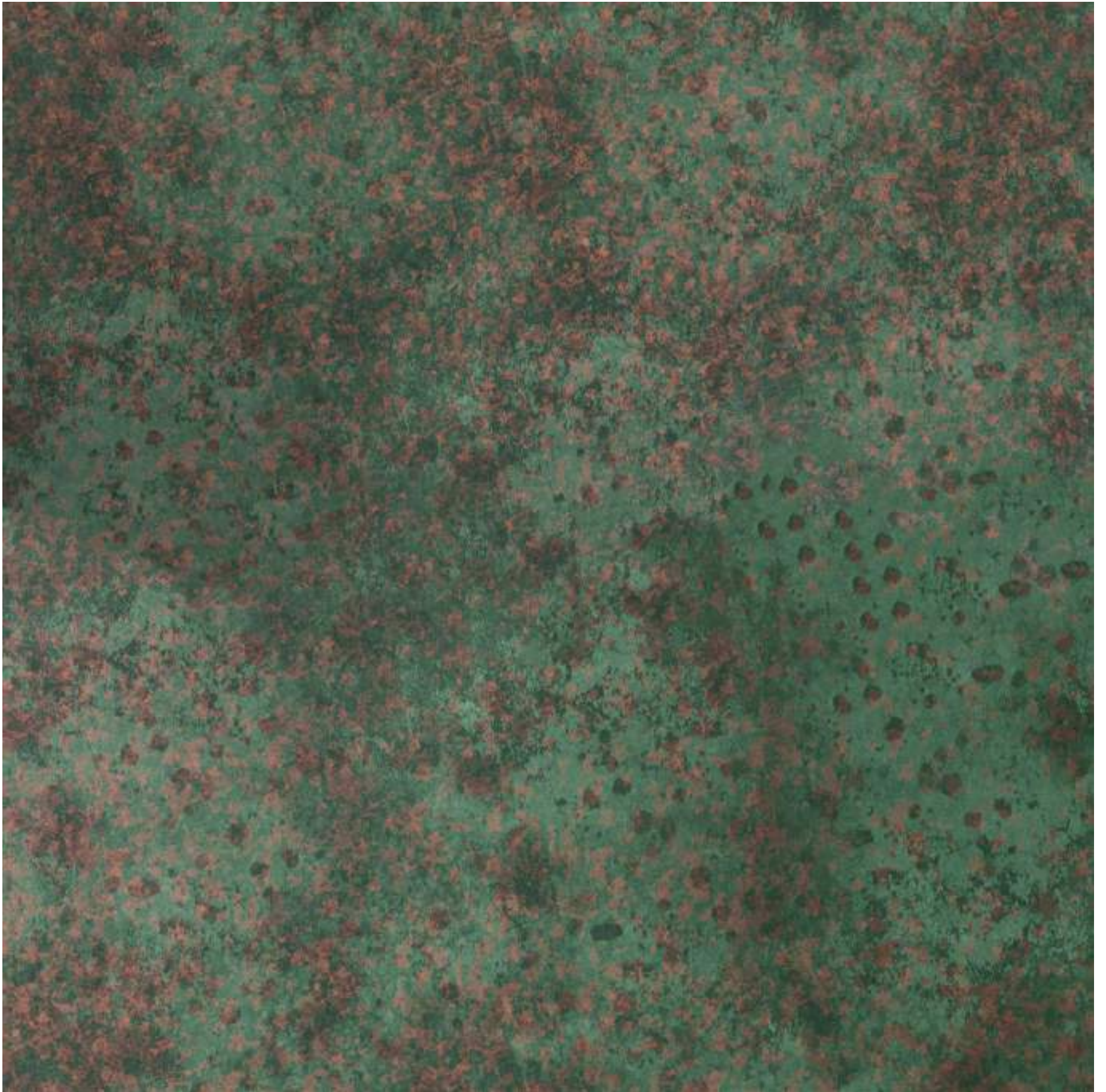
Creative visualisation. Actual product may vary.



Creative visualisation. Actual product may vary.



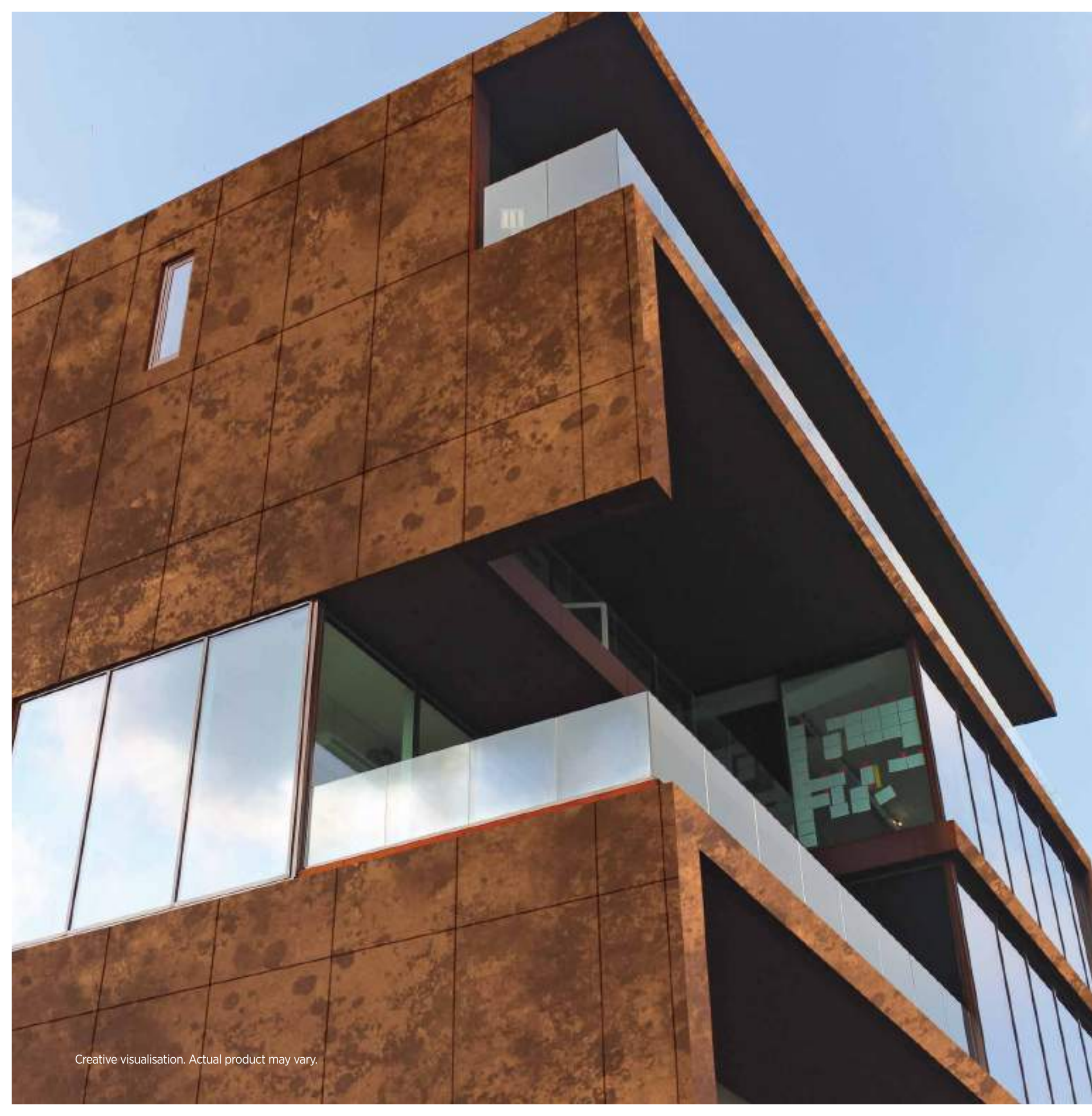
CS-02 | Patina Minted Copper | Guerilla Collection



CS-03 | Patina Oxidised Copper | Guerilla Collection



Creative visualisation. Actual product may vary.



Creative visualisation. Actual product may vary.



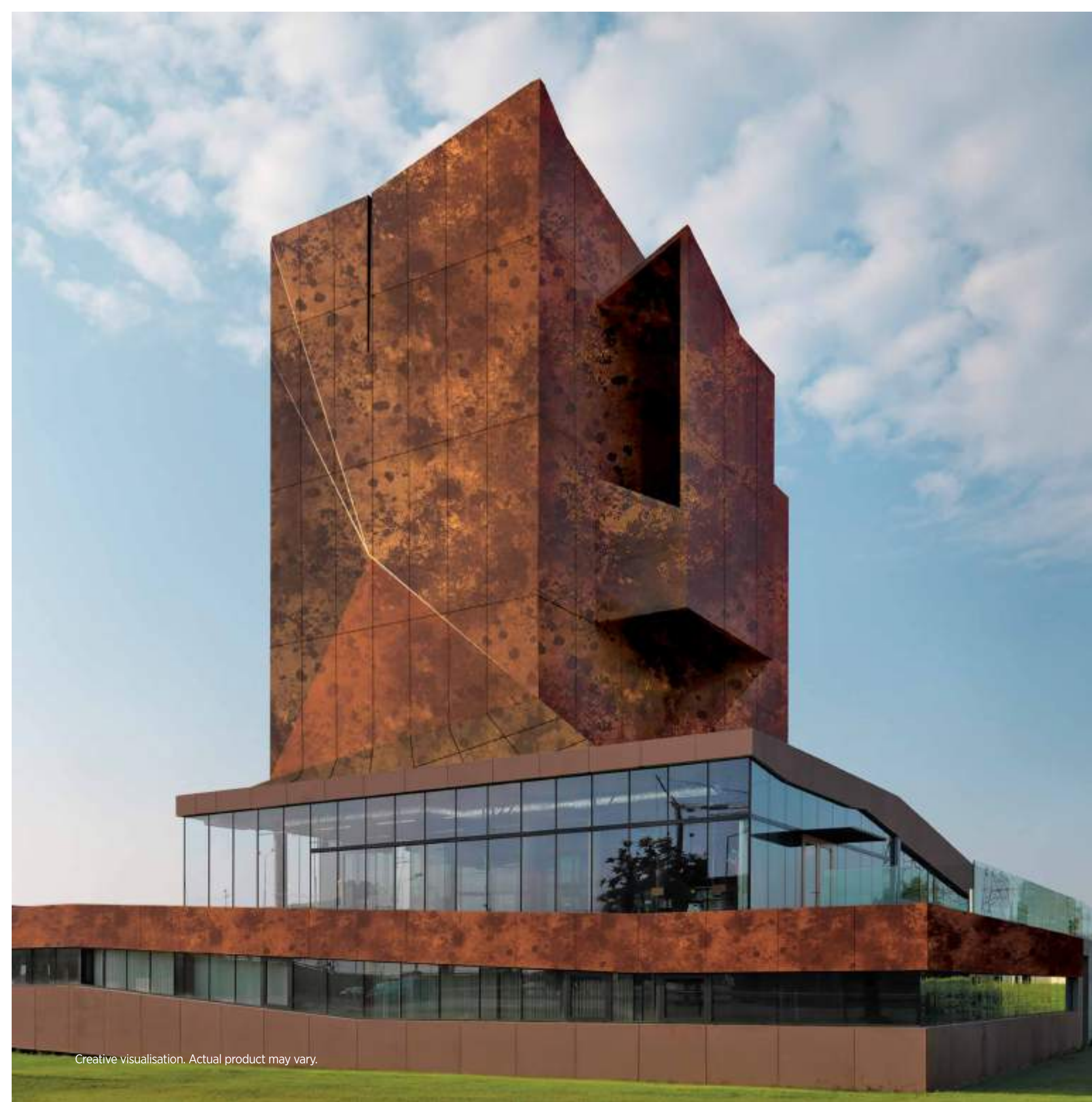
CS-04 | Rugged Yellow | Guerilla Collection



CS-05 | Rugged Orange | Guerilla Collection



Creative visualisation. Actual product may vary.



Creative visualisation. Actual product may vary.



CS-06 | Rugged Brown | Guerilla Collection



CS-07 | Rugged Red | Guerilla Collection



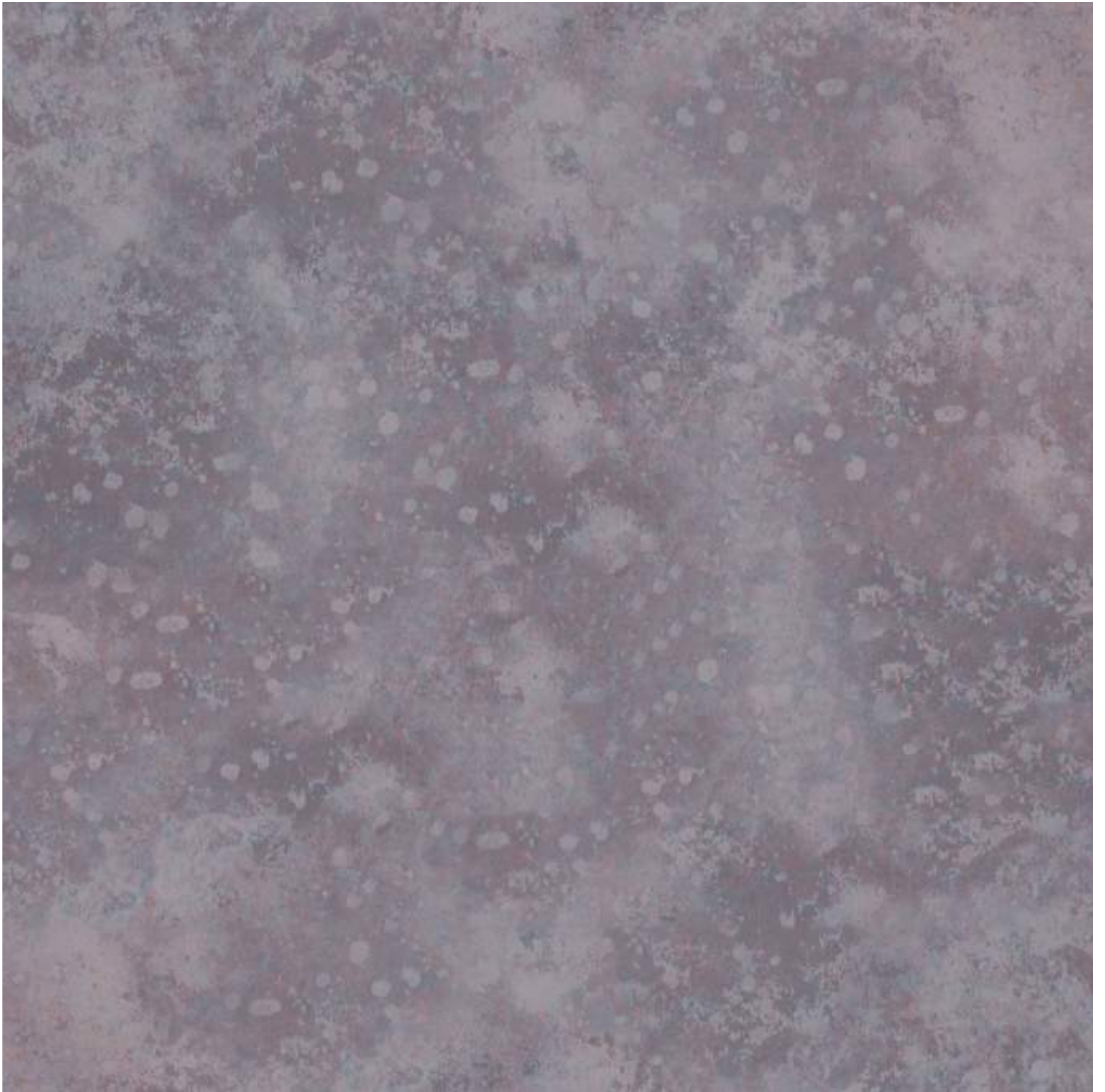
Creative visualisation. Actual product may vary.



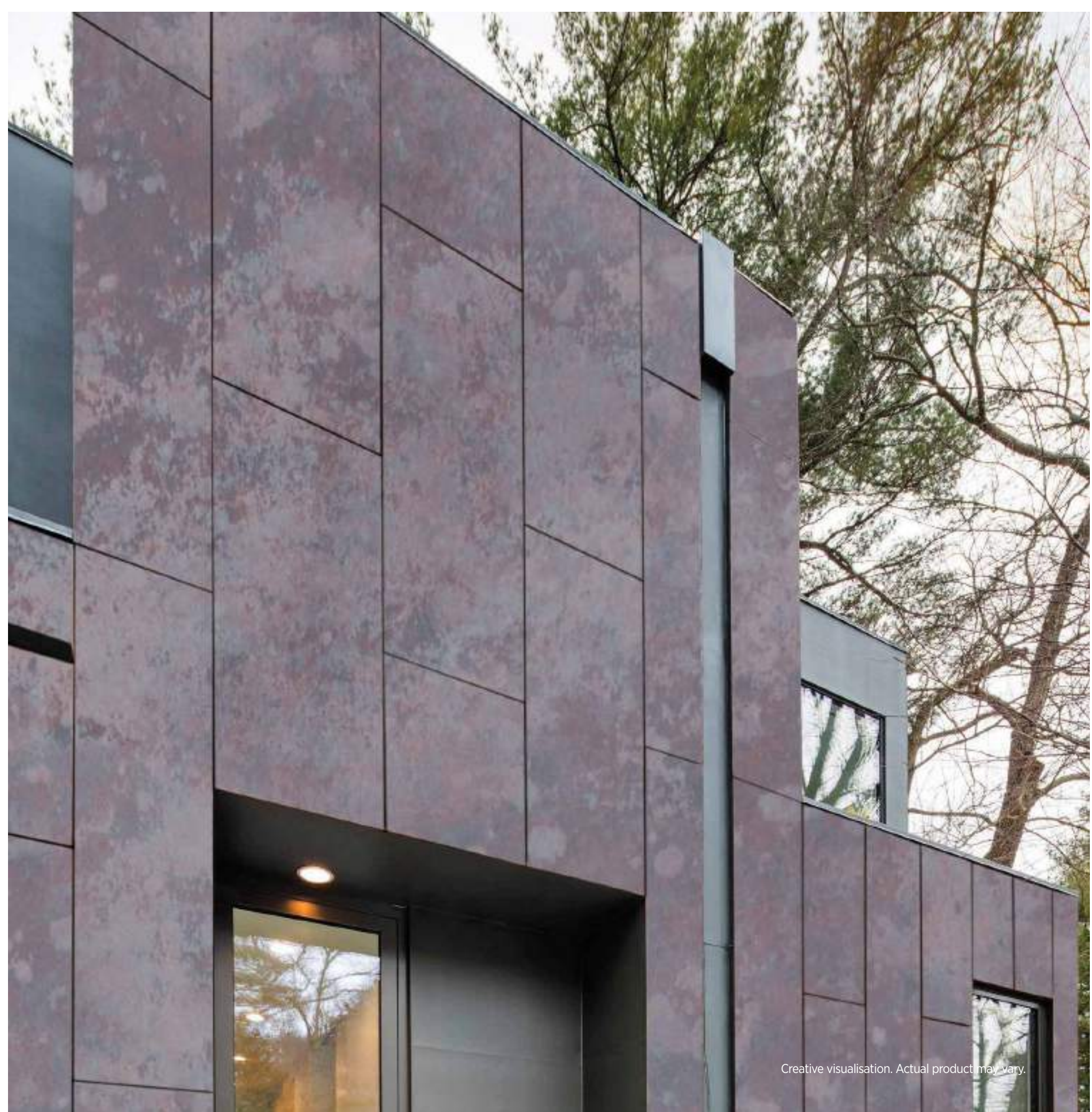
Creative visualisation. Actual product may vary.



CS-08 | Fossil Zinc | Guerilla Collection



CS-09 | Rustiq Zinc | Guerilla Collection



Creative visualisation. Actual product may vary.



Creative visualisation. Actual product may vary.



MA-01 | Beton Silver | Brut Collection



MA-02 | Béton Smoke | Brut Collection

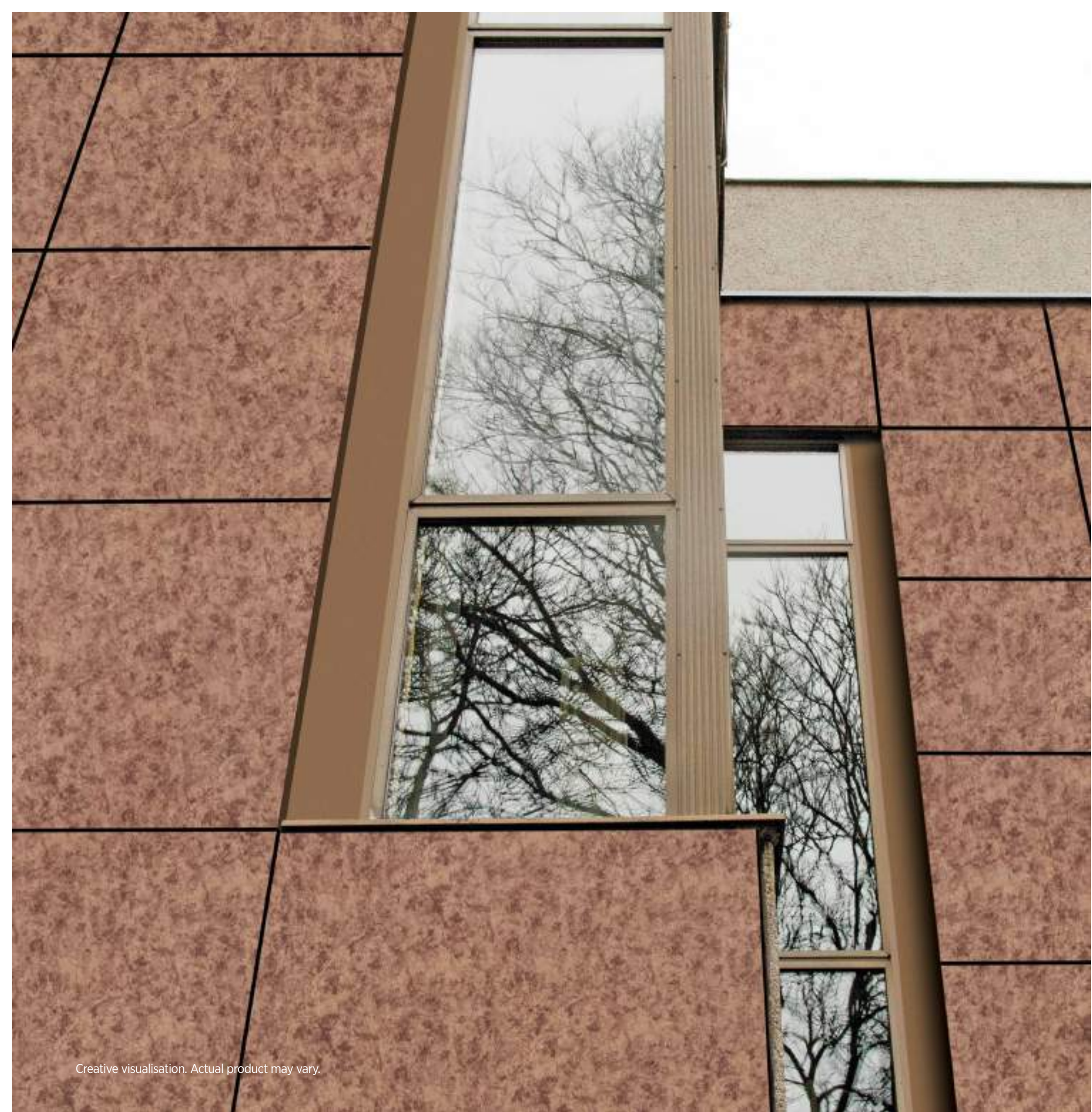
Wabi Sabi



Wabi Sabi



Creative visualisation. Actual product may vary.



Creative visualisation. Actual product may vary.



MA-04 | Béton Copper | Brut Collection



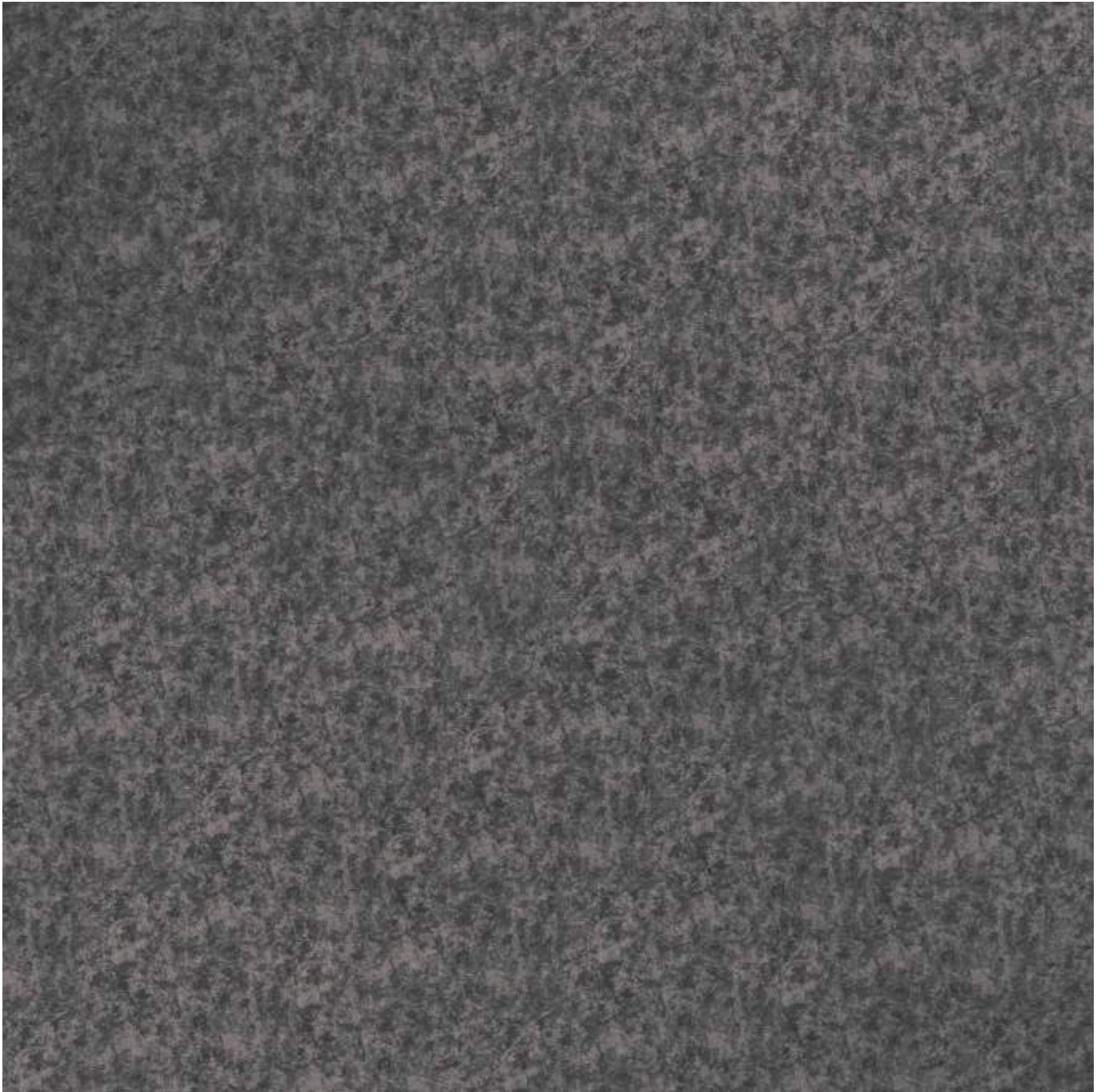
MA-05 | Béton Gold | Brut Collection



Creative visualisation. Actual product may vary.



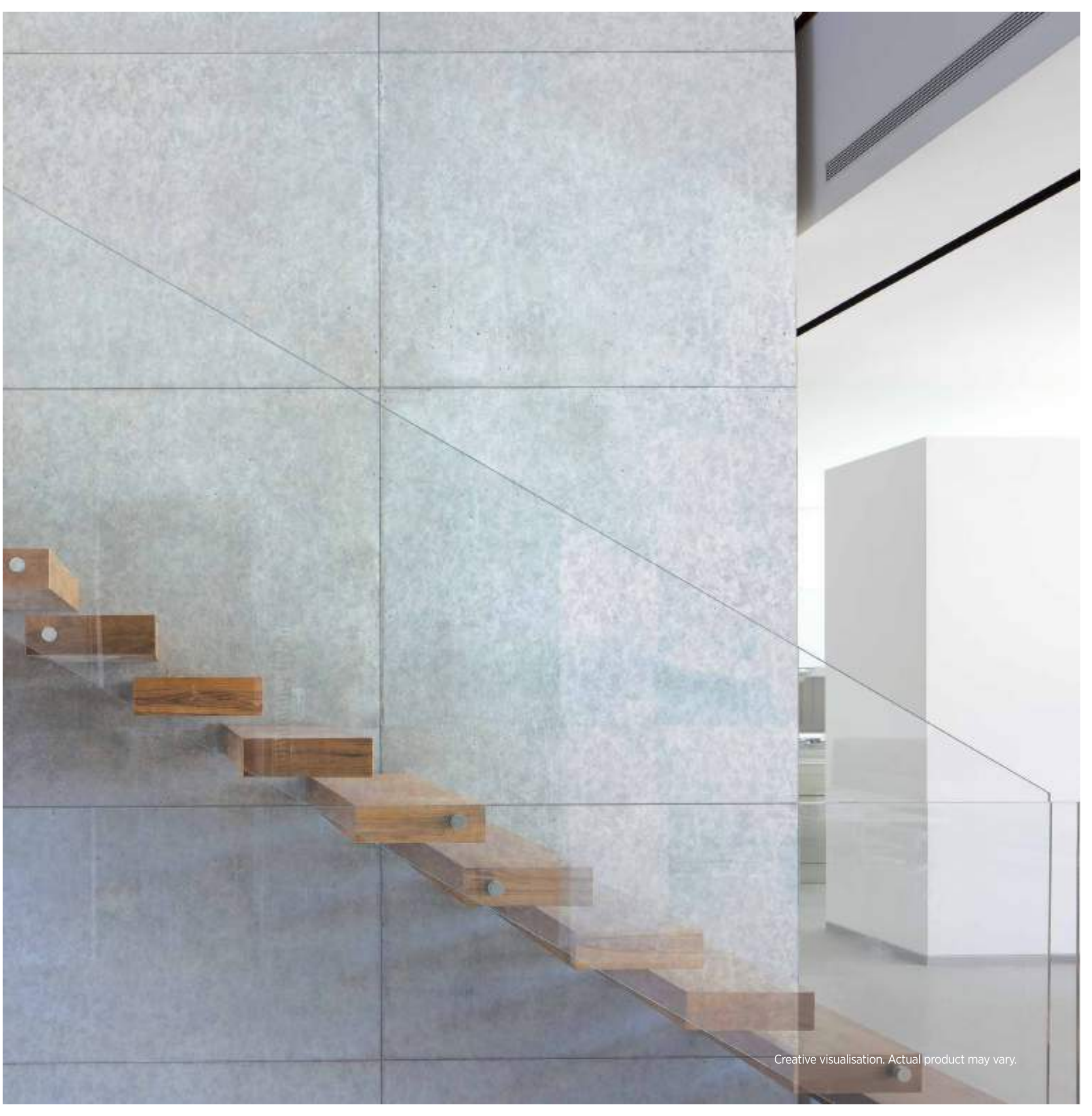
Creative visualisation. Actual product may vary.



MA-07 | Béton Black | Brut Collection



MA-08 | Béton White | Brut Collection



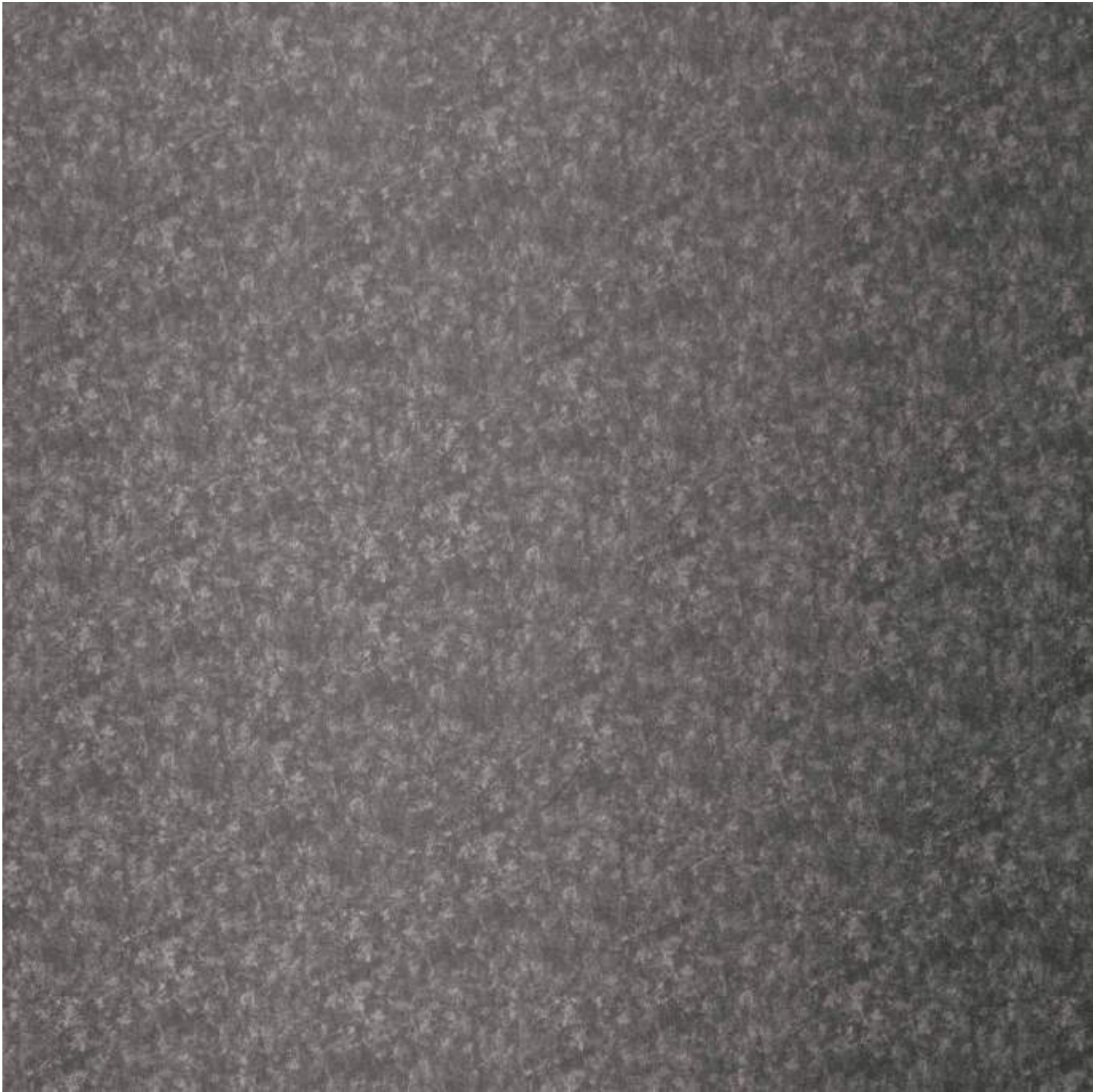
Creative visualisation. Actual product may vary.



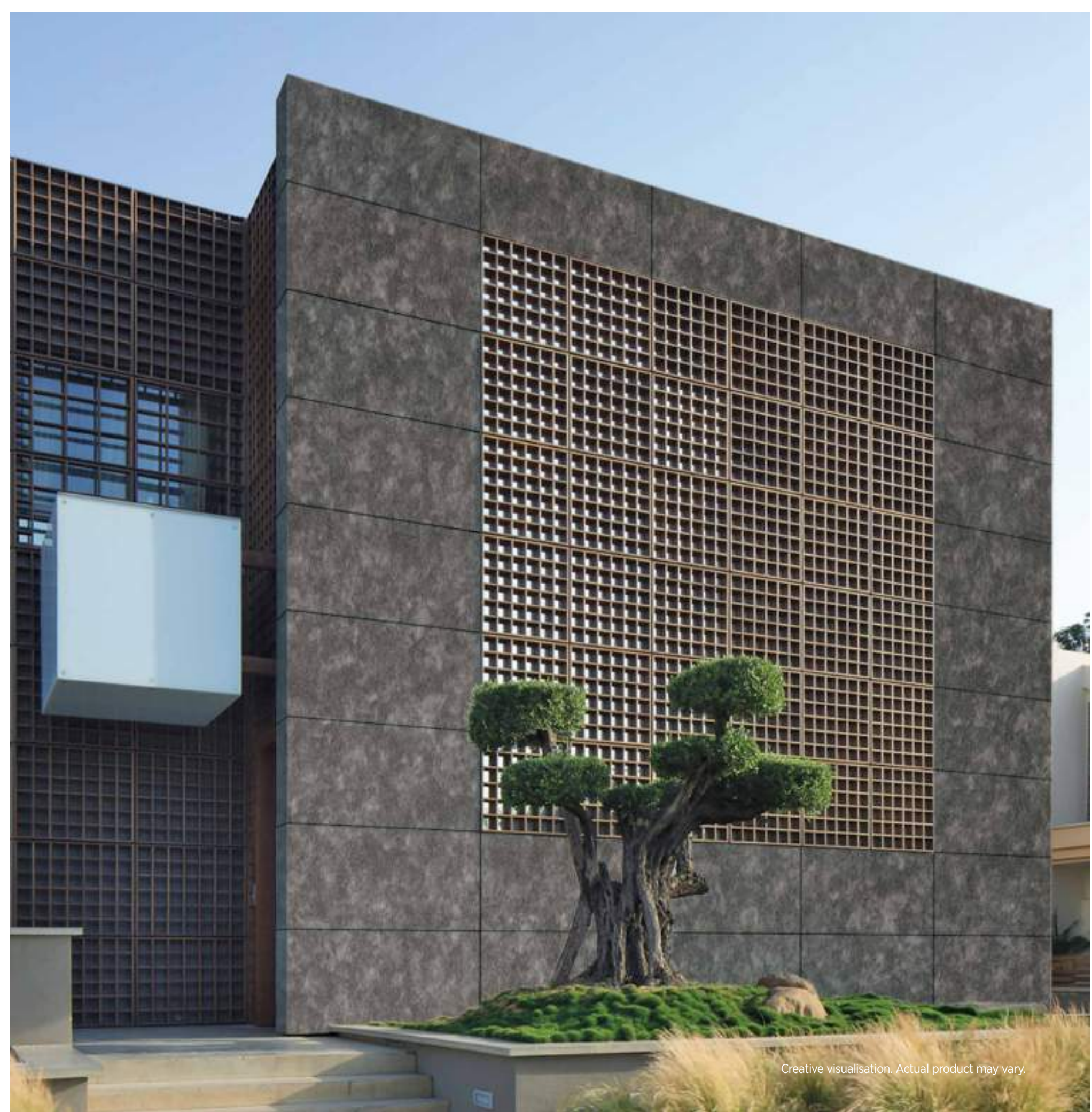
Creative visualisation. Actual product may vary.



MA-09 | Antiq Ebony | Brut Collection



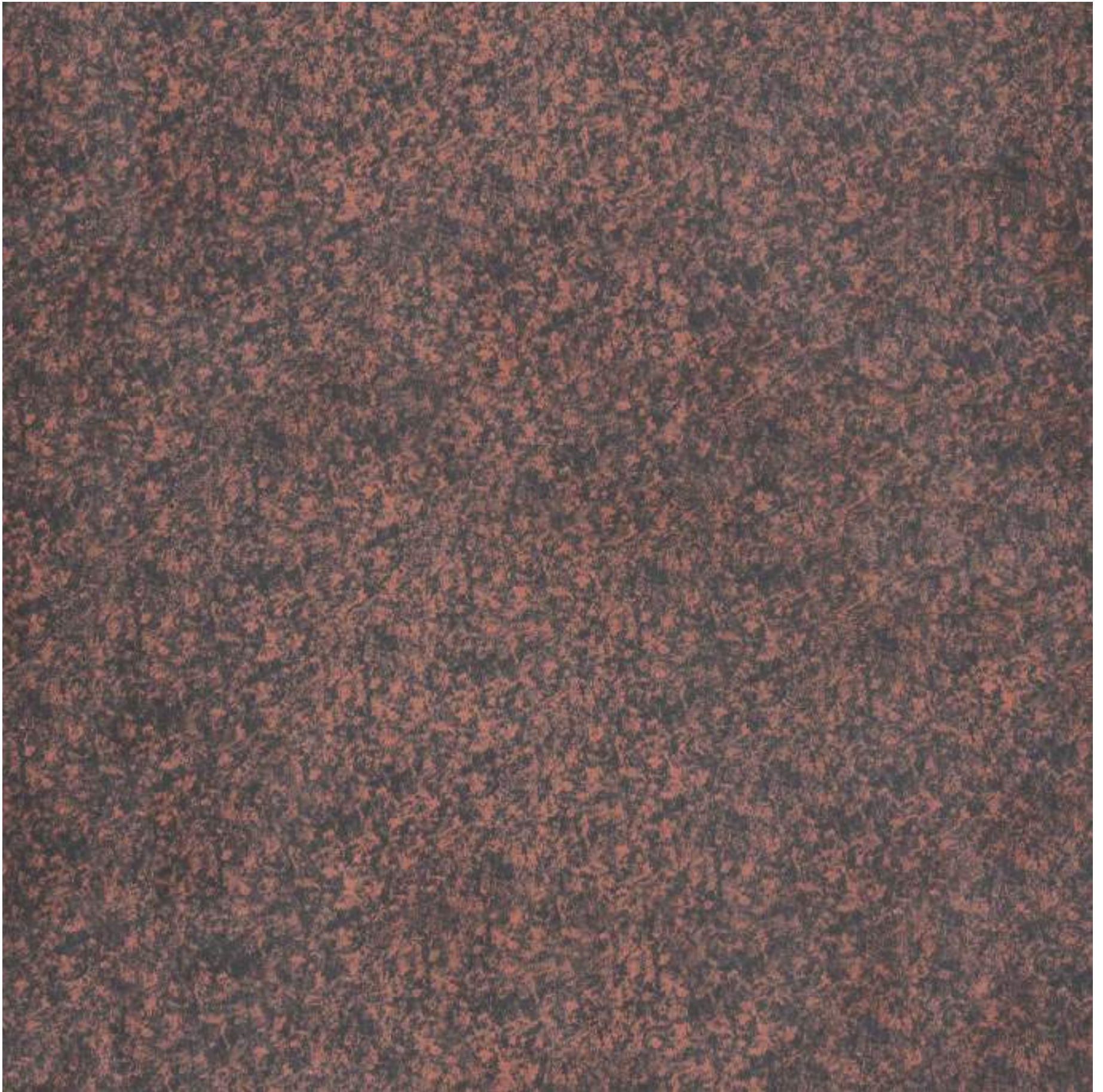
MA-10 | Antiq Slate | Brut Collection



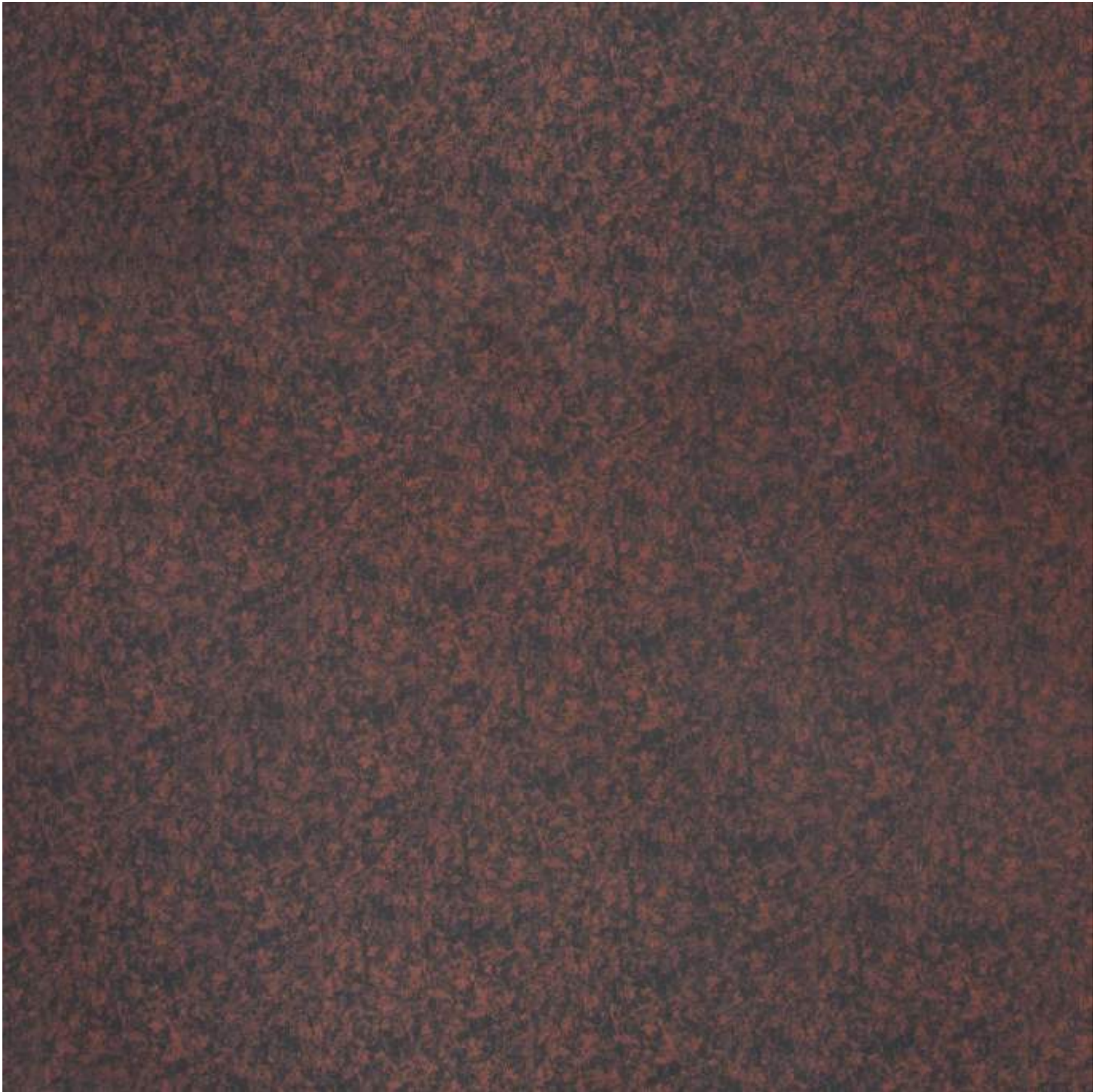
Creative visualisation. Actual product may vary.



Creative visualisation. Actual product may vary.



MA-11 | Antiq Russet | Brut Collection



MA-12 | Antiq Taupe | Brut Collection



Creative visualisation. Actual product may vary.

Looks best. Lasts longest.



Aludecor Systems are versatile and can be assembled quickly. They are a concealed fixing system of the following types . . .

**Male
Female
Rainscreen**

**Hanging
Rainscreen**

**Pressure
Equalised
Rainscreen**



Product Specification

Sr. No.	Particulars	Product Composition						
1	PRODUCT GRADE	AL 45		AL 43		AL 33		
2	TOTAL THICKNESS OF THE PANEL	4 mm		4 mm		3 mm		
3	THICKNESS OF THE ALUMINIUM SKIN (Top skin/Bottom skin)	0.5 mm		0.25 mm		0.25 mm		
4	THICKNESS OF LDPE/MINERAL CORE	3 mm		3.5 mm		2.5 mm		
5	GRADE OF ALUMINIUM SKIN	AA 3105 / *AA 5005 (Supplier-Hindalco)		AA 1100 (Supplier-Hindalco)		AA 1100 (Supplier-Hindalco)		
6	COATING THICKNESS (Front coil)	30 μ - 35 μ (Three coat paint system) Suppliers: AkzoNobel/PPG/ Beckers/Nippon		30 μ - 35 μ (Three coat paint system) Suppliers: AkzoNobel/PPG/Beckers/ Nippon		30 μ - 35 μ (Three coat paint system) Suppliers: AkzoNobel/PPG/Beckers/ Nippon		
7	COATING THICKNESS (Back coil)	4 μ - 7 μ Service coat		4 μ - 7 μ Service coat		4 μ - 7 μ Service coat		
8	PRODUCT TOLERANCE	WIDTH	LENGTH	THICKNESS		SQUARENESS	BOW	
				COIL	PANEL		AL 45	AL 43 & AL 33
		±2.0 mm	±4.0 mm	±0.03 mm	±2.0 mm	Maximum 5.0 mm	Maximum 0.5% of width and/or length	Maximum 0.8% of width and/or length

*Wabi Sabi Panels are also available in AA5005 against minimum order quantity.

AludecoR
FireWall A2
Fireproof MCPs*

AludecoR
FireWall
Fire Retardant MCPs

Aludecor MCPs are available in both FireWall A2 and FireWall grades. They have Factory Production Control certification from Exova Warringtonfire of the UK (ewcl⁵) for reaction to fire classifications of EN 13501-1 Class A2 – s1, do for FireWall A2 and EN 13501-1 Class B–s1, do, for FireWall. The FireWall even has the certification of BS476, Part 6 and 7 Class O with 2 hours resistance to fire in accordance with ASTM E119-12.

A2 is only available in AL45 grade whereas Aludecor Firewall is available for a wide range of ACPs.

#BeatTheFire

*Aludecor FireWall A2 has fireproof properties close to metals.



AludecoR
DA DESIGN ASSIST

Customised digital support

Get 3D previews
of the interiors and exteriors
you wish to fabricate and more . . .

- 1 Visit aludecor.com
 - 2 Go to the Support Section
 - 3 Click on the Design Assist Section
 - 4 Follow step-by-step instructions for fabrication ideas
- . . . absolutely FREE!

At Aludecor our aim is to facilitate imagination, creativity and innovation. We ensure this through future-friendly products that raise the bar, every day.

Stringent measures are adopted to make sure that the products meet international standards. Since 2004 the company has consistently upgraded technology, introduced superior aesthetics, used the best raw materials and established new parameters for excellence in the national market of Metal Composite Panels (MCPs) and coated coils.

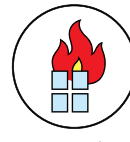
Reasons to buy Aludecor MCPs



Flexible



Durable



Fire-retardant



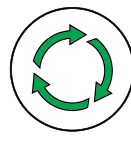
Use of
Lead-free paints



Helps buildings
qualify for LEED



PVDF Coating



Recyclable



Saves energy



15
years
of trust & excellence