



ASHOKA FOAM GROUP COMPANIES

Ashoka Foam (A Furnishing Mall)

Ashoka Foam Multiplast Pvt. Ltd.
Mfg. ACP, Molded Furniture, Spring Mattress

Ashoka Poly Laminators Ltd.
Mfg. HDPE/PP Fabric, Tarpauline, Bag, Flexible Packaging

Ashoka P.U. Foam (India) Pvt. Ltd.
Mfg. Polyurethane Foam, EPE Foam

Ashoka Foam Pvt. Ltd.
Mfg. WPC / PVC FOAM BOARD, Free Foam (Sun Board)

Goels Coir Foam (India) Pvt. Ltd.
Mfg. Rubberised Coir Mattress

Humble Healthcare Ltd.
Pharmaceutical Division



ASHOKA FOAM MULTIPLAST PVT. LTD.

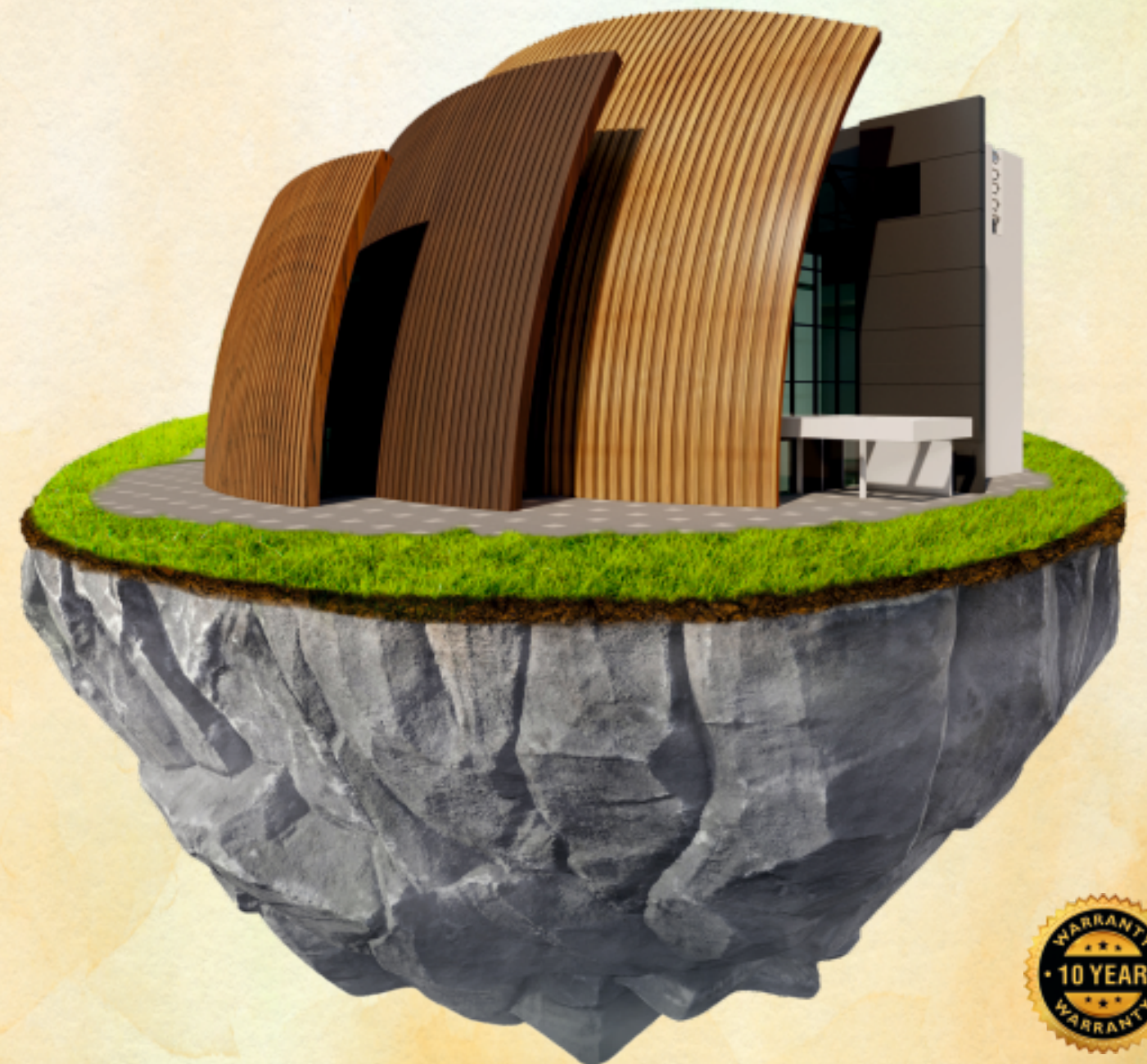
Factory : Ashoka Foam Group Industrial Area, Lucknow Road, Bareilly (U.P.) 243 001
 Corporate Office : V-6, Near Agrasen Park, Rampur Garden, Bareilly (U.P.)
 Email : sales@alutuff.in
 Website : www.alutuff.in
 Customer Care : +91-8006400368, 9536907772



FLUTING
INTERLOCKING LOUVERS

HIGH PRESSURE
LAMINATES

PREMIUM
SERIES



About Us

Ashoka Foam Group was Established in 1987. Alutuff brand is a leading manufacturer and exporter of Aluminium Composite Panels, Aluminium Composite Wall Panels and Aluminium Composite Roof Panels. We have world class and advanced level of super wide aluminium panels, widely used for construction of residential and commercial buildings. We are specialized in manufacturing of weather resistance and fire proof aluminium panels, with more than 10 years of development, we have established trusted business relationships with customers in India and worldwide. We can also customise requirements, so we warmly welcome customised product orders according to clients. Alutuff has wide usage as panel applies in Balcony and Canopy Cladding, Bank & Institutions, Columns Covers and Beam Wraps, Commercial and Public Signs, Corporate Identity, Display Boards, Malls, Multiplexes, Showroom Finishes, Spanderal and Canopy Panels.

High Pressure Laminates

Alutuff is leading and one of the largest manufacturers of Aluminium Composite Panel in India. We play a very important and vital role in introduction of new ranges at regular intervals and focus on those products which can be the best and enthuse our customers. It's through our commitment to our product quality, Alutuff ACP/HPL is a high quality construction product available in large variety with innovative ideas, an eye catching appeal. It's offers unmatched, aesthetics, styles and durability.

Product : Alutuff HPL

- A premium product introduced by Alutuff for residence & commercial buildings.
- It's developed as an alternative to natural wood & marble.
- It's comes in plank with different colors and designs.

Better than HPL : (Compared to Paper Base)

- Top & Bottom Skin both are aluminium not paper.
- PVDF Coating not melamine coating.
- Affordable in price & high in quality.
- Ready available in all colors.
- High UV resistance.

Advantages

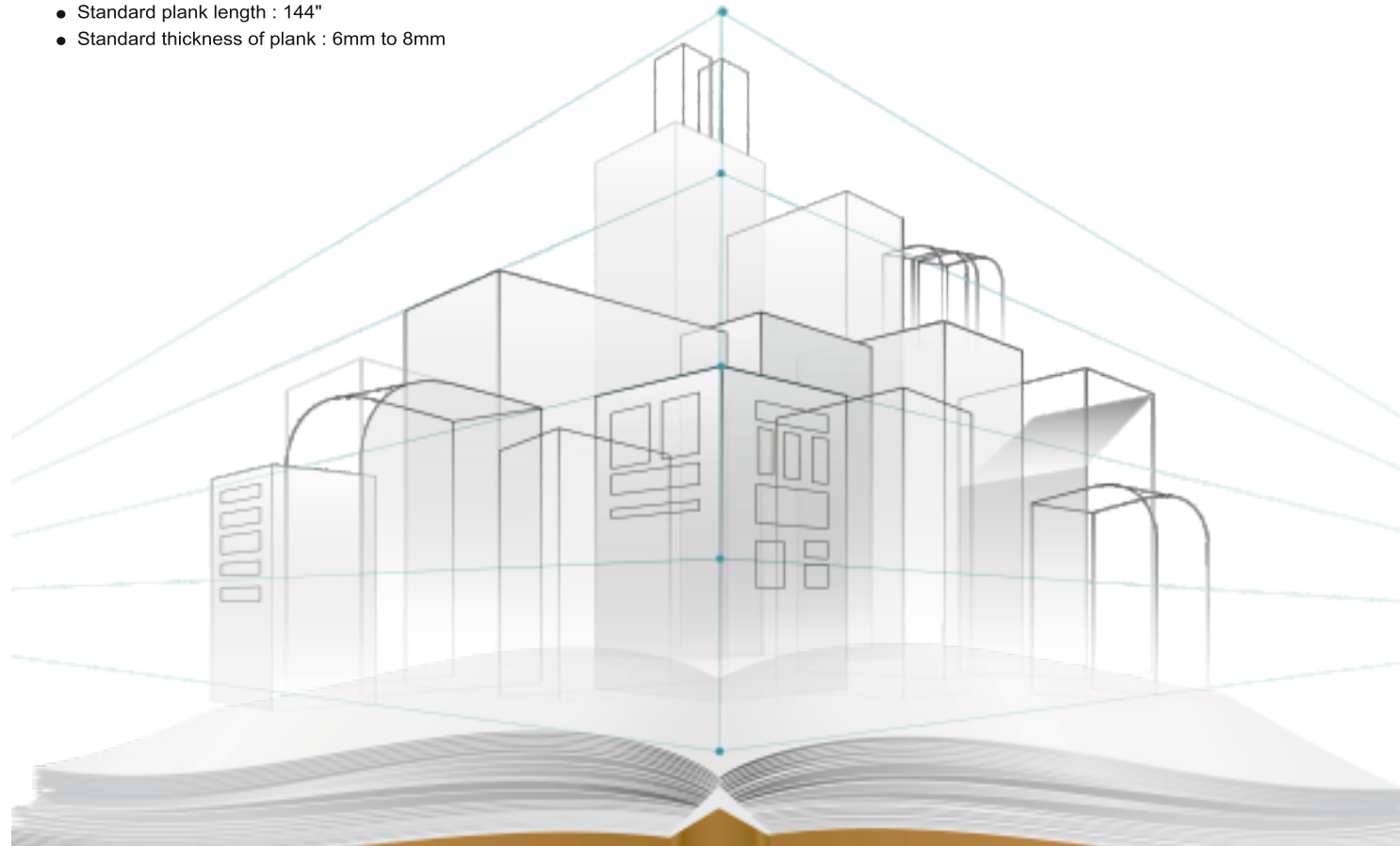
- Alloy 3003 Series
- 10 years warranty.
- Laser & CNC Cutting Possible.
- 100% maintenance free.
- No polish is required.
- Design flexibility.
- Saves construction time and cost at the last stages of construction.
- Resistant to fire, water & termite.
- Cuts out the labour with its easy fittings & faster installation.
- Long lasting.

Fixing Details

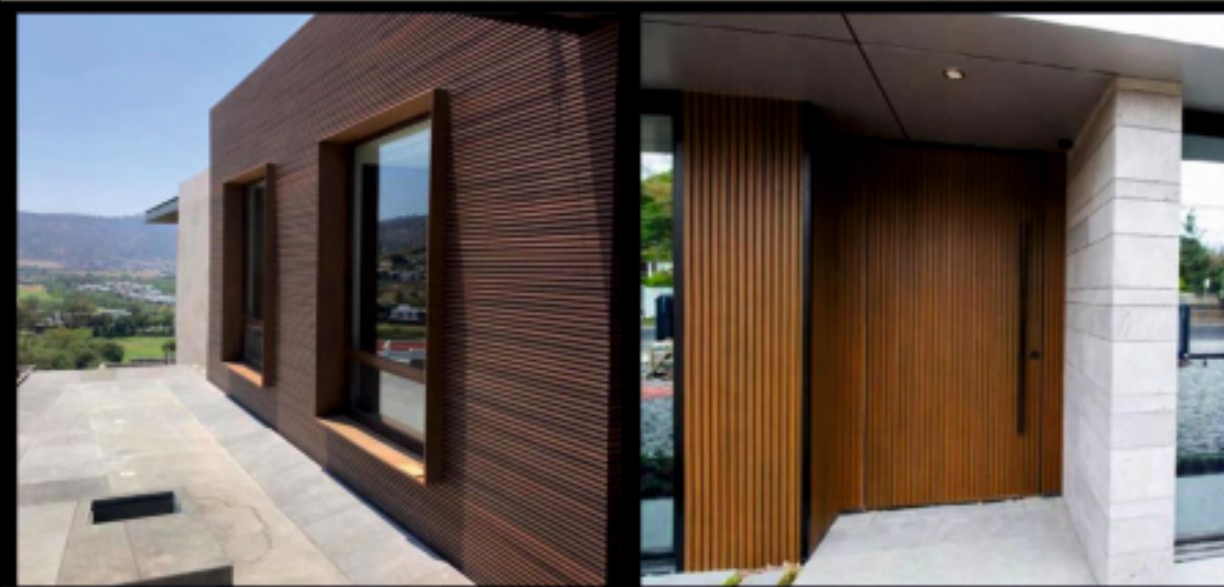
Description	Specification
Aluminium tube (Black Powder Coated)	25 x 38 x 1.6mm
Aluminium Angle (Cleat)	19 x 19 x 2mm
Screw (Powder Coated)	SS 25" (Star Headed)
Rowel Plug	25mm

Plank Dimensions

- Standard plank width : 6, 9, 12, 48 "
- Standard plank length : 144"
- Standard thickness of plank : 6mm to 8mm



**FLUTING
INTERLOCKING LOUVERS**



EXTERIOR APPLICATIONS

- EXTERIOR CLADDING
- CANOPY
- GATE PANELING
- FENCE & RAILING



INTERIOR APPLICATIONS

- BALCONY CLADDING
- ROOF CLADDING
- INTERIOR - HIGHLIGHTER, PANELS



NEW WOODEN AND NATURAL TEXTURES

Wood, sand and marble have formed creative expression for centuries. Artists and sculptors have shaped these materials in several forms, bringing to life master pieces to admire for generations.

Facia Aluminium High-Pressure Laminates from Alutuff are now available in wooden, sand, marble and other natural textures that express purity of design with the benefits of durability, flexibility and termite-protection for a lifetime. These panels have high quality textures protected with top class coating produced by cutting-edge machine.

Alutuff Facia is a creative outcome of years of research. These panels can be bent at the corners to provide a lustrous look on commercial or residential buildings. Alutuff will continue to innovate on design and technology to lead the market with fresh ideas and affordable solutions.



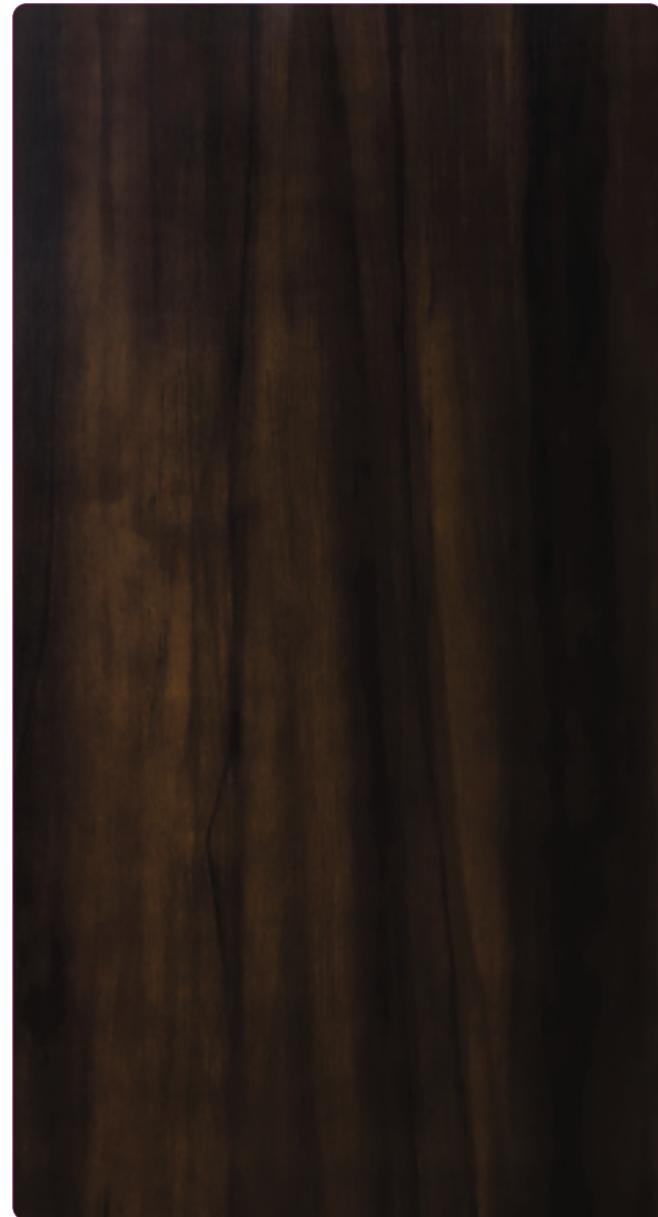
ATF150 CORTEN STEEL



facia
High-Pressure Laminates



ATF153 AUTUMN COPPER



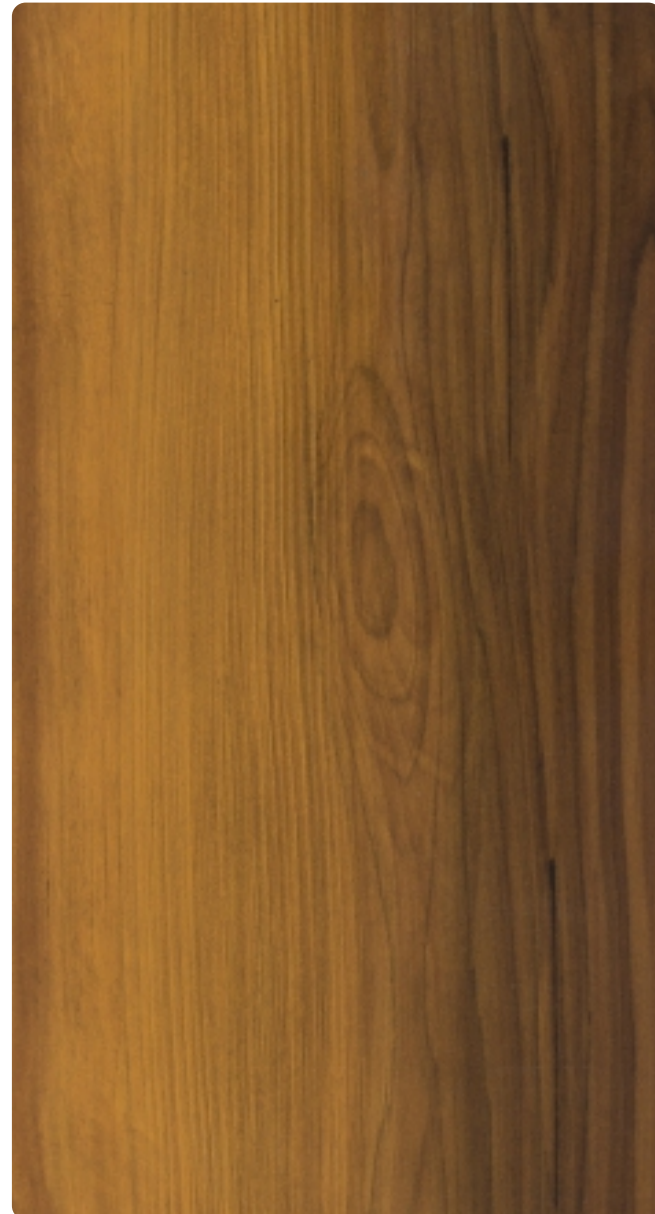
ATF154 CRAFT WOOD



facia
High-Pressure Laminates



ATF145 PREMIUM MAGHONY



ATF 155 TROPICAL HARDWOOD



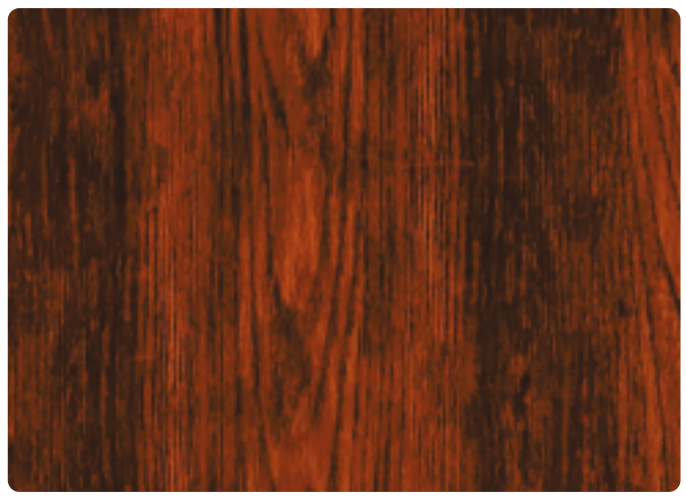
ATF141 ROYAL WALNUT



ATF 144 OAK PINE



ATF119 RUSTIC WOOD



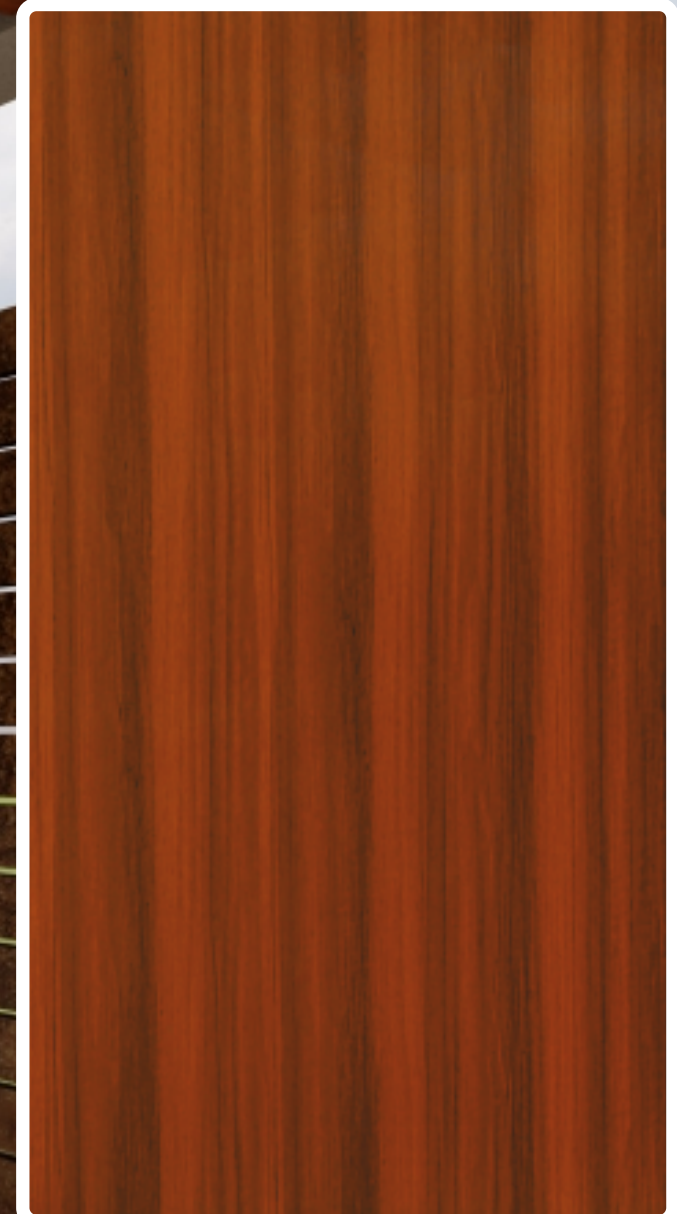
ATF132 AMAZONIAN FOREST



ATF134 MEDITERRANEAN COAST



ATF 142 BALINESE TEAK



ATF123 ROYAL TEAK



ATF101 ROSE WOOD



ATF124 NATURAL TEAK

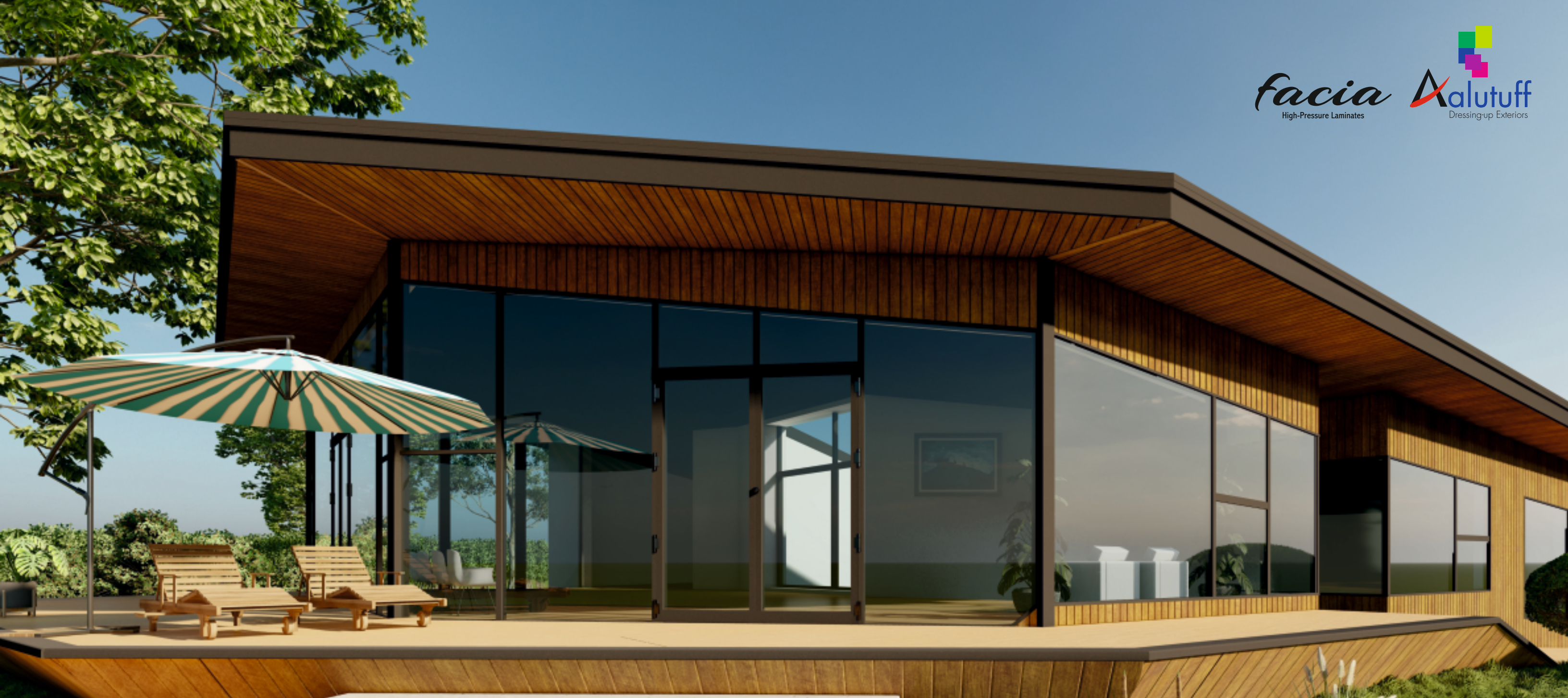


ATF128 DARK WANGY

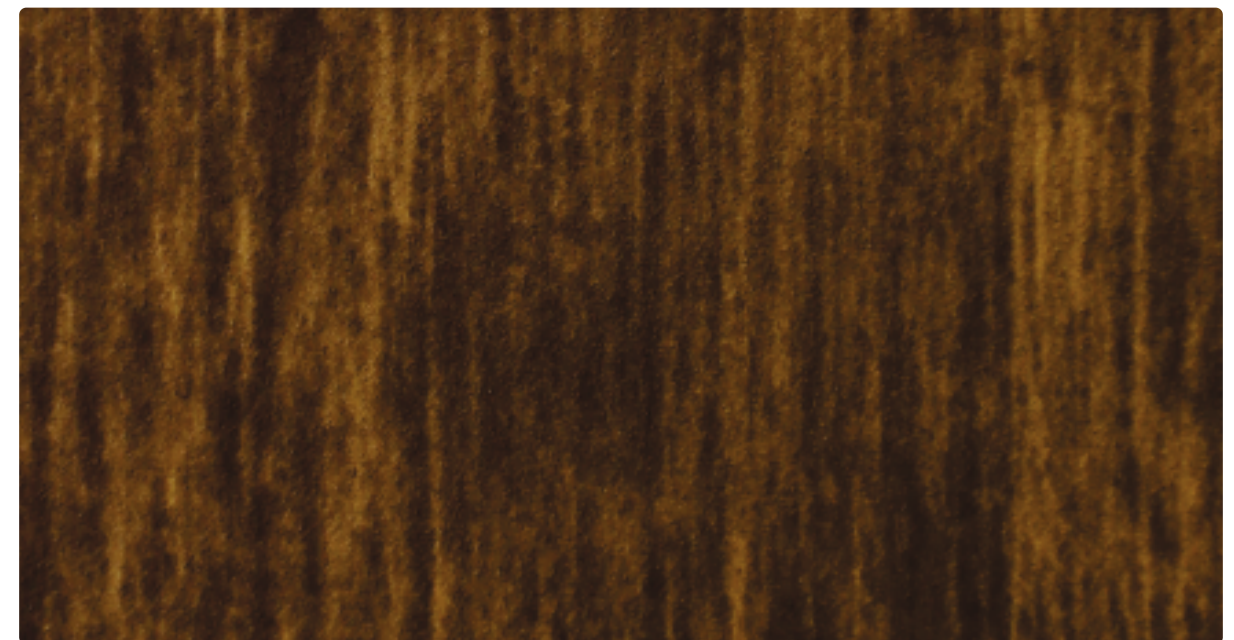


ATF133 SAGANO SAUNA

facia
High-Pressure Laminates



ATF107 WALNUT



ATF 146 CLASSIC WALNUT

facia
High-Pressure Laminates



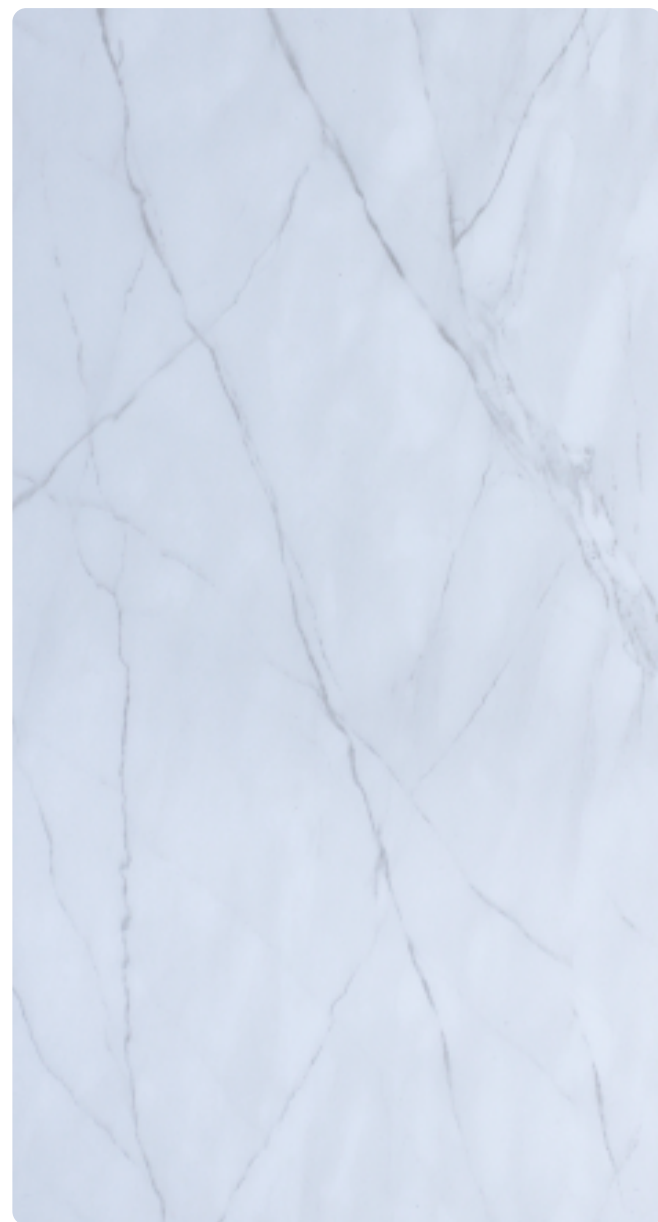
ATF156 GREY CERAMIC



ATF157 CORRODED METAL



facia
High-Pressure Laminates

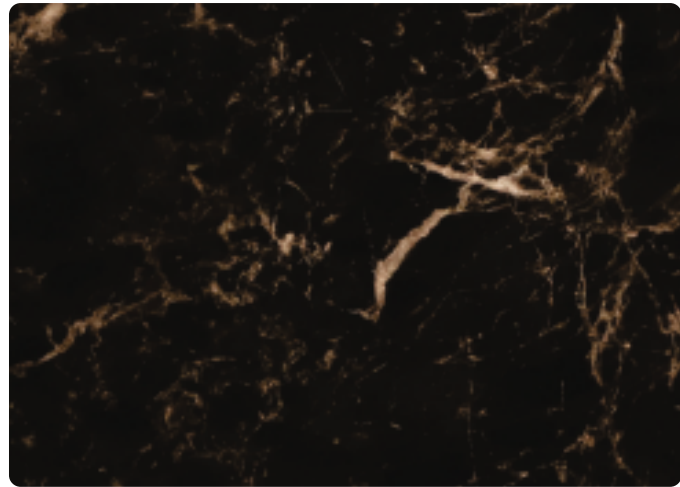


ATF151 SATVARIO

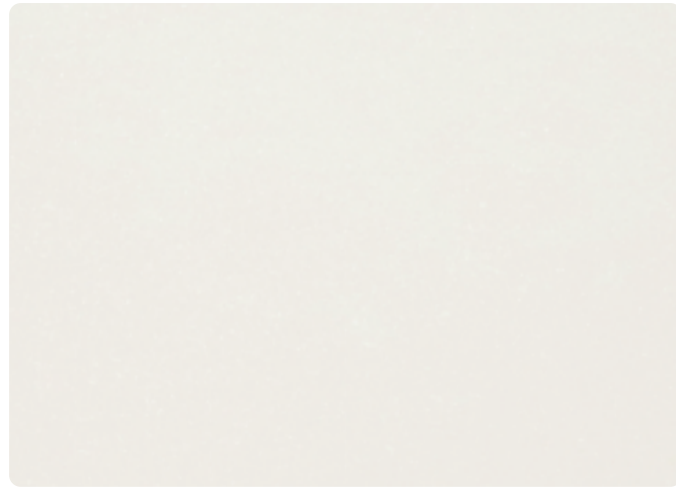


ATF152 BLACK CAMBRIC

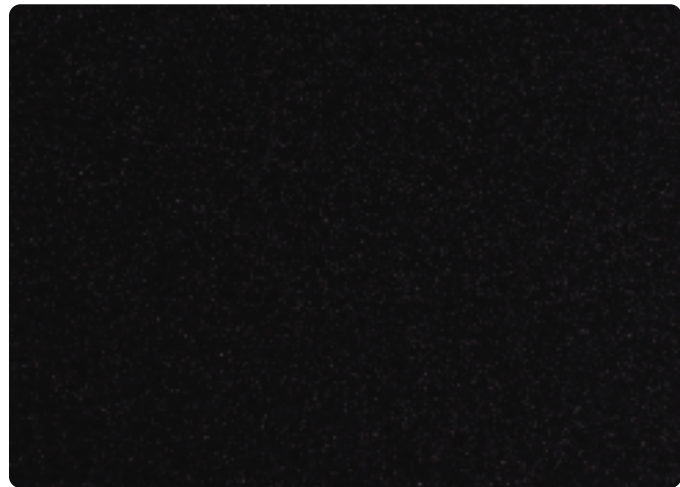




ATF110 BROWN MARBLE



ATF112 WHITE GRANITE



ATF113 BLACK GRANITE



ATF122 ANGOLA BLACK GRANITE



ATF109 ITALIAN MARBLE



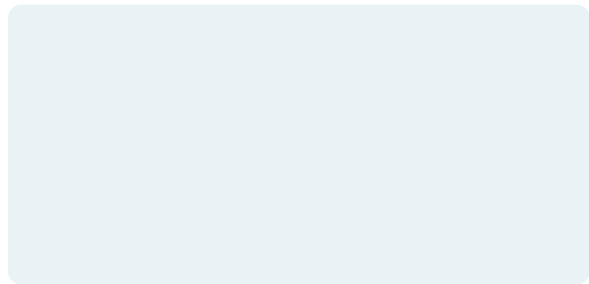
ATF149 VENENZULA STONE

MARBLE & STONE

facia
High-Pressure Laminates



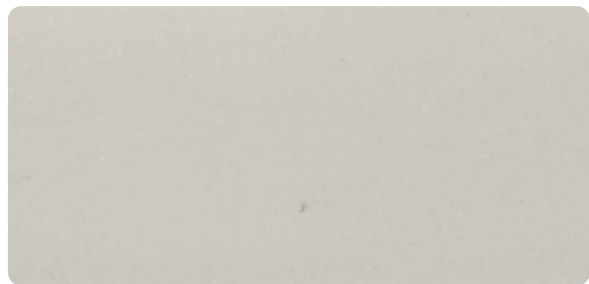
ATS01 LUNAR GREY SAND



ATS02 TULA ROSA WHITE SAND



ATS03 BASKA BEACH SAND



ATS04 SILK GREY



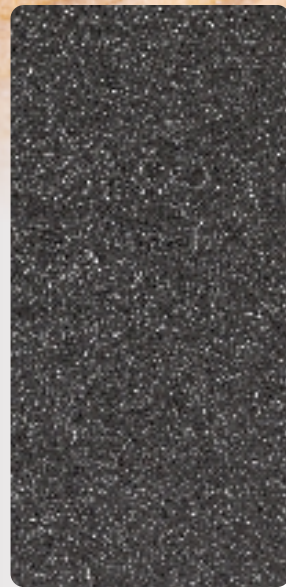
ATS05 CEMENT

RUSTIC SERIES





ATE 01 NIGHT GREY SAND



ATE 02 DARK GREY SAND



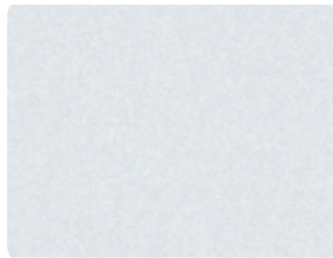
ATE 03 LIGHT MOON SAND



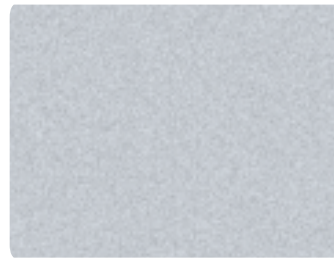
ATE 05 RED WINE SAND

SAND SERIES





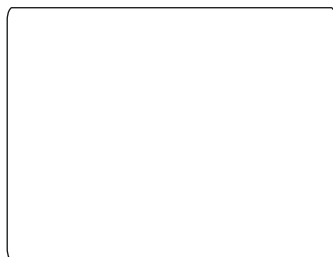
AT 01 BRIGHT SILVER



AT 02 METALLIC SILVER



AT 04 CHAMPAGNE GOLD



AT 05 PURE WHITE



AT 07 CLASSIC GOLD



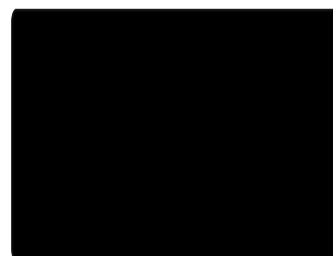
AT 08 BRIGHT RED



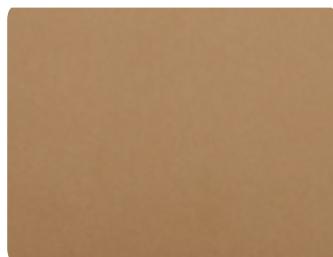
AT 10 SIGNAL BLUE



AT 11 COPPER METALLIC



AT 12 BLACK



AT 14 COPPER PENNY



AT 15 PEARL COPPER



AT 18 NAVY BLUE



AT 19 TRAFFIC YELLOW



AT 20 PURE YELLOW



AT 22 BURGUNDY

BOLD & SOLID

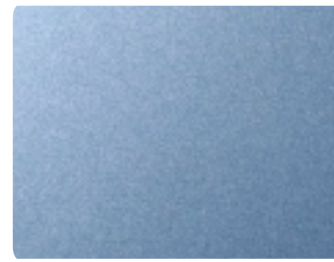




AT 25 REFRESHING ORANGE



AT 26 SILVER BLACK



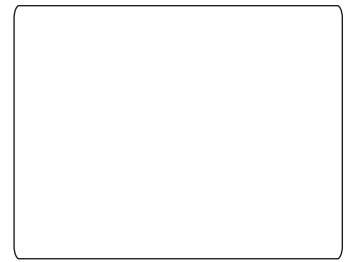
AT 28 METALLIC BLUE



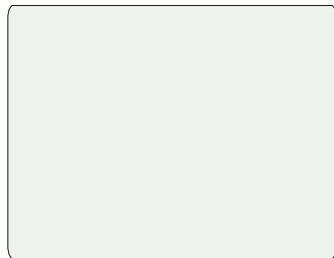
AT 54 GLOSSY RED



AT 60 BRUSH SILVER



NEW ARRIVAL



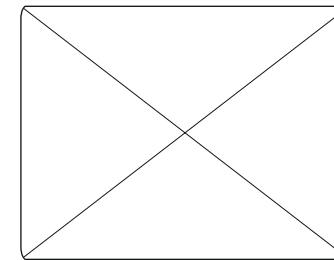
AT 31 OFF WHITE



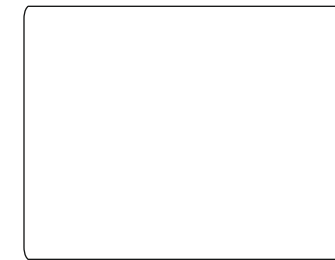
AT 32 COPPER BRONZE



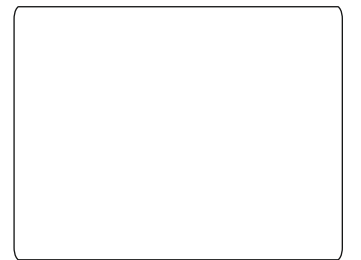
AT 33 CHOCOLATE BROWN



NEW ARRIVAL



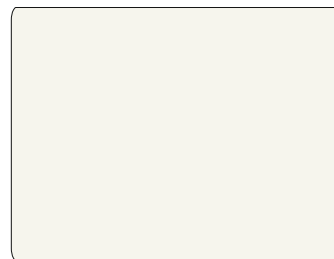
NEW ARRIVAL



NEW ARRIVAL



AT 34 COFFEE SILVER



AT 35 GLOSSY WHITE



AT 36 SAMSUNG BLUE

BOLD & SOLID



AT 41 BRIGHT GREEN



AT 43 SLATE GREY



AT 46 GLOSSY BLACK



AT 50 SILVER MIRROR



AT 51 GOLD MIRROR



AT 53 DARK BRONZE

Specifications

GRADE	TOTAL THICKNESS	FRONT COIL THICKNESS	CORE THICKNESS / TYPE	BACK COIL THICKNESS	COATING	APPLICATION
PREMIUM	4 MM	0.50	HIGH GRADE POLYMER/LDPE	0.50 MM	PVDF	EXTERIOR
PREMIUM	4 MM	0.25		0.25 MM	PVDF	EXTERIOR
CLASSIC	3 MM	0.25		0.25 MM	PVDF	EXTERIOR
FR	4 MM	0.50	3 MM / Mg (OH) 2 & or Al (OH) 3	0.50 MM	PVDF	EXTERIOR
FR	4 MM	0.25	3.5 MM / Mg (OH) 2 & or Al (OH) 3	0.25 MM	PVDF	EXTERIOR

Sizes : Width - 915 mm, 1240 mm & 1525 mm
(Length can be customized as per requirement)

Alloy 3003 series

Custom Specifications

We design panels in strict accordance with your imagination and your demands. We brainstorm, create, innovate, customize and construct panels of your choice. We combine different attributes and sizes, following your wish and hence, minimize wastage. We pay attention to all of your demands.

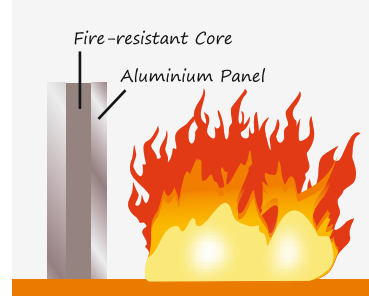
- Color, Size and Composition
- Different Aluminium Grades
- Different PE Grades
- Unconventional Widths



Fire Grade HPL/ACP

Fire-retardant (FR) materials have become an ingredient in modern construction. With more and more skyscrapers towering towards the skies in bustling cities, fire protection has taken center stage across the world. Using Genuine FR material is critical to safety in the Fire Rated Construction System.

A typical ACP-clad facade in India has a frame structure comprising a non-load-bearing brick wall, followed by plaster, steel frame and an ACP envelope fixed on the frame. As an important criterion for resistance to fire, the ACP envelope should contain fire and retain its structural integrity up to 2 hours. But that's not the only feature that contributes to fire protection. An authentic rating for resistance to fire also takes into account that smoke kills faster than fire, among other vital factors. This is where Alutuff FR ACP- Fireshield stands above the rest.



The Core Secret

Fireshield is a non-halogenated FR material that produces water vapour when its heat up. It does not produce toxic gases like the halogenated materials. Magnesium Hydroxide (MDH) is the non-halogenated material that is mixed with PE to form the core of Alutuff FR products. MDH has a better fire-resistance performance than Aluminium Trihydrate (ATH), transformation from solid to plastic (the point of ignition) up to 360, by releasing water molecules and bringing down the temperature continuously.

Core Details	Polyethylene	Magnesium Hydroxide (MDH)	Aluminium Trihydrate (ATH)
Chemical reaction	$CH_2 + O_2 = CO_2 + H_2O$	$Mg(OH)_2 = MgO + H_2O$	$2Al(OH)_3 = Al_2O_3 + 3H_2O$
Decomposition temperature	90oC to 110oC	310oC to 360oC	190oC to 240oC
Status	Heat generation	Heat absorption	Heat absorption

The State of the Art FR Grade ACP Production Unit.

Alutuff the end-to-end production facility is fireproof and completes with global standards. The one production unit, spread over 25,000 sqm at Bareilly, is equipped with up-to-date technology and testing facilities. The stringent quality control system keeps a sharp eye on each and every unit process.

The Trusted Choice

Alutuff Fireshield having more than 71% mineral content and made with AA5005/AA3105 alloy, is a tried and tested non-halogenated FR ACP which:

Will not produce toxic gases that cause death. 80% of death in a fire accident is caused by smoke which is a dreadful combination of CO and Co2.

Will not blur vision and thus make it easy for people to get out via the escape routes.

Will not release excessive heat onto other materials that can cause fire.

