



ASHOKA FOAM GROUP COMPANIES

Ashoka Foam (A Furnishing Mall)

Ashoka Foam Multiplast Pvt. Ltd.
Mfg. ACP, Molded Furniture, Spring Mattress

Ashoka Poly Laminators Ltd.
Mfg. HDPE/PP Fabric, Tarpauline, Bag, Flexible Packaging

Ashoka P.U. Foam (India) Pvt. Ltd.
Mfg. Polyurethane Foam, EPE Foam

Ashoka Foam Pvt. Ltd.
Mfg. WPC / PVC FOAM BOARD, Free Foam (Sun Board)

Goels Coir Foam (India) Pvt. Ltd.
Mfg. Rubberised Coir Mattress

Humble Healthcaare Ltd.
Pharmaceutical Division



**FLUTING
PANELS**

**HIGH PRESSURE
LAMINATES**

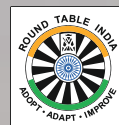
**PREMIUM
SERIES**

**3D
PANELS**



ASHOKA FOAM MULTIPLAST PVT. LTD.

Factory : Ashoka Foam Group Industrial Area, Lucknow Road, Bareilly (U.P.) 243 001
 Corporate Office : V-6, Near Agrasen Park, Rampur Garden, Bareilly (U.P.)
 Email : sales@alutuff.in
 Website : www.alutuff.in
 Customer Care : +91-8006400368, 9536907772



Channel Partner

**ALUMINIUM
COMPOSITE PANELS**





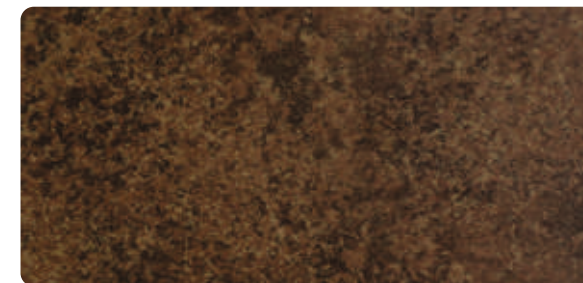
FLUTING

INTERLOCKING LOUVERS

CORTEN SERIES



ATF149 VENENZULA STONE



ATF150 CORTEN STEEL



ATF156 GREY CERAMIC



ATF152 BLACK CAMBRIC



ATF157 CORRODED METAL



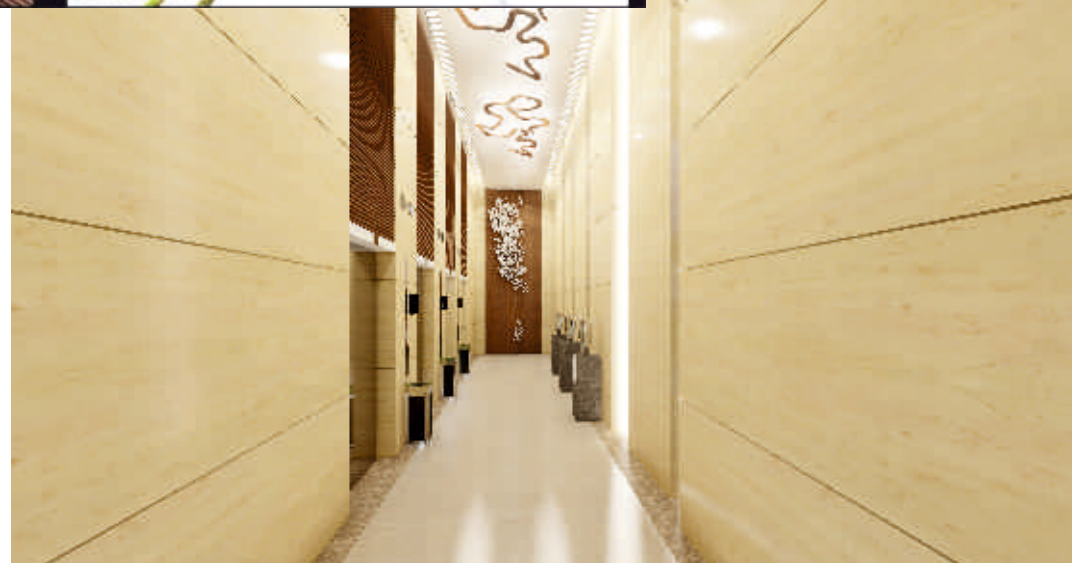
EXTERIOR APPLICATIONS

- EXTERIOR CLADDING
- CANOPY
- GATE PANELING
- FENCE & RAILING



INTERIOR APPLICATIONS

- BALCONY CLADDING
- ROOF CLADDING
- INTERIOR - HIGHLIGHTER, PANELS



FLUTING
PANELS

HIGH PRESSURE
LAMINATES

PREMIUM
SERIES

3D
PANELS

facia
High-Pressure Laminates

Alutuff
Dressing-up Exteriors



ATF 158 RUGGED COPPER



ATF 159 RUGGED ANTIQ



ATF 160 RUGGED FOSSIL



ATF 161 RUGGED OAK

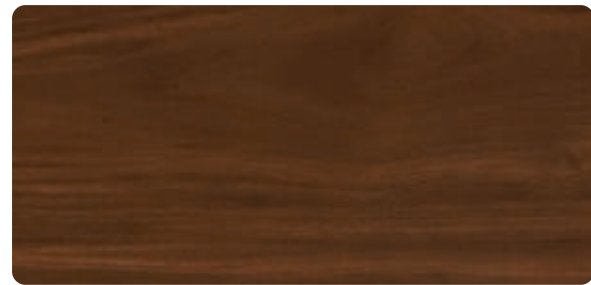
WOODEN PRIME



ATF 101 ROSE WOOD •



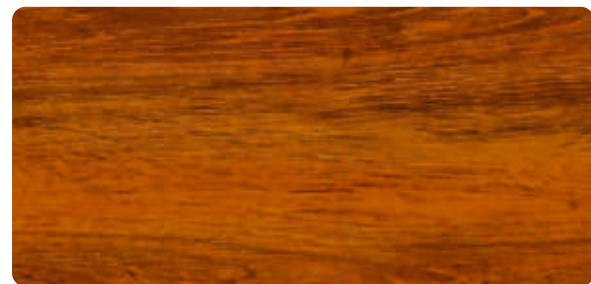
ATF 124 NATURAL TEAK



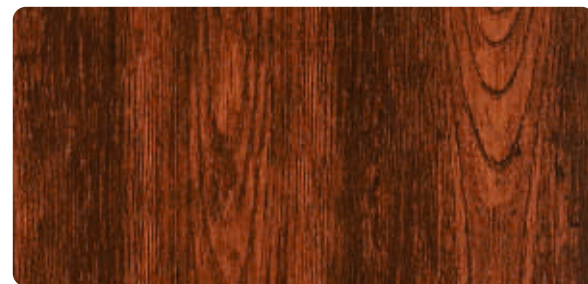
ATF 107 WALNUT



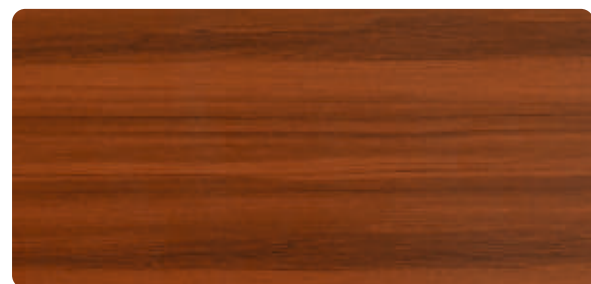
ATF 128 DARK WANGY •



ATF 119 RUSTIC WOOD •



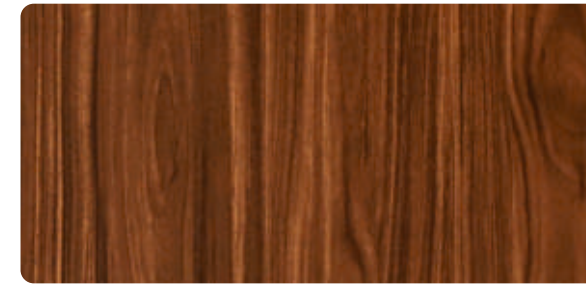
ATF 132 AMAZONIAN FOREST



ATF 123 ROYAL TEAK •



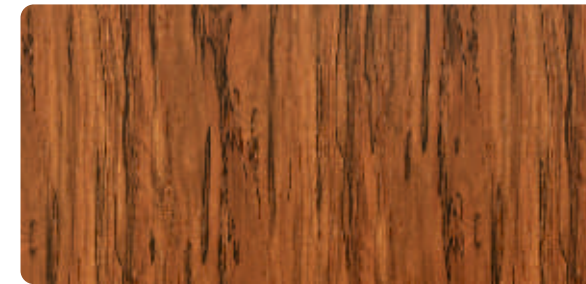
ATF 133 SAGANO SAUNA



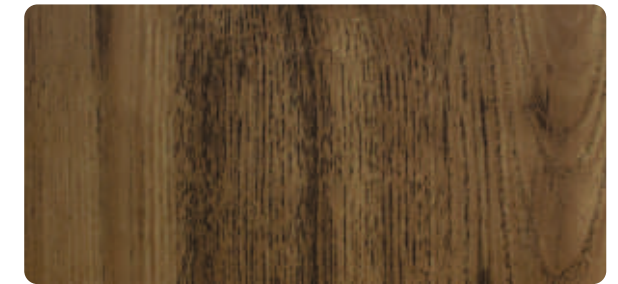
ATF 134 MEDITERRANEAN COAST



ATF 146 CLASSIC WALNUT



ATF 141 ROYAL WALNUT •



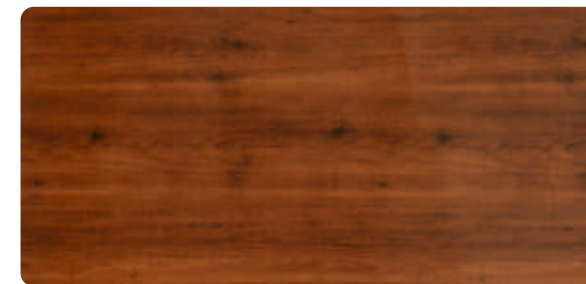
ATF 153 AUTUMN COPPER



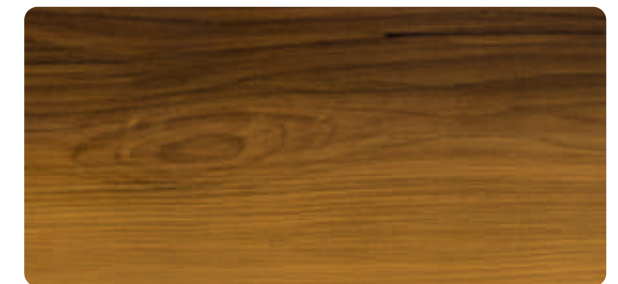
ATF 142 BALINESE TEAK



ATF 154 CRAFT WOOD



ATF 144 OAK PINE •



ATF 155 TROPICAL HARDWOOD



ATF 145 PREMIUM MAGHONY •



ATF 162 CHINTO PINE •



FLUTING

INTERLOCKING LOUVERS

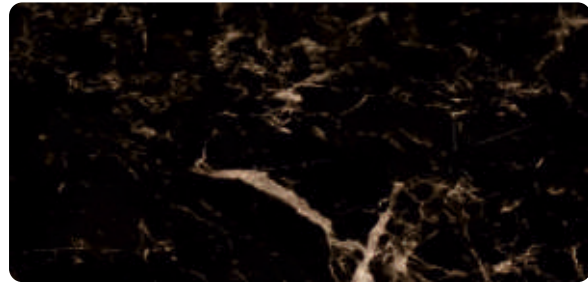
MARBLE & STONE



ATF 109 ITALIAN MARBLE



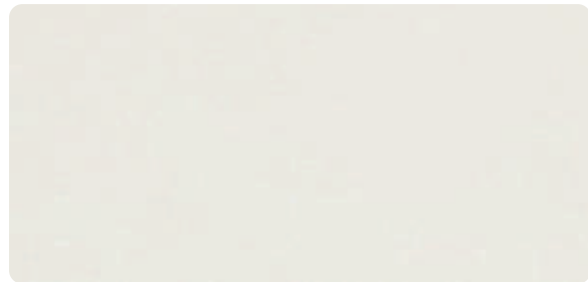
ATF 113 BLACK GRANITE



ATF 110 BROWN MARBLE



ATF 122 ANGOLA BLACK GRANITE



ATF 112 WHITE GRANITE



ATF 151 SATVARIO



NEW ARRIVAL



NEW ARRIVAL



FLUTING

INTERLOCKING LOUVERS

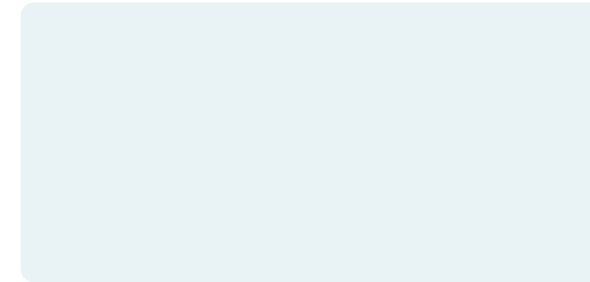
RUSTIC & MIRROR SERIES



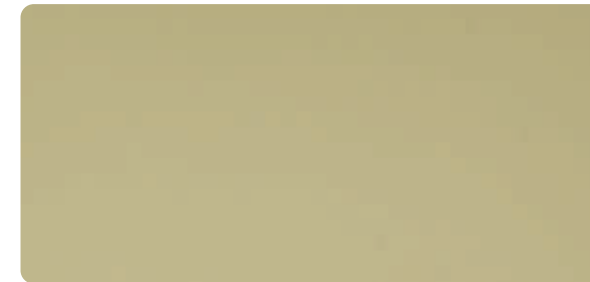
ATS 01 LUNAR GREY SAND



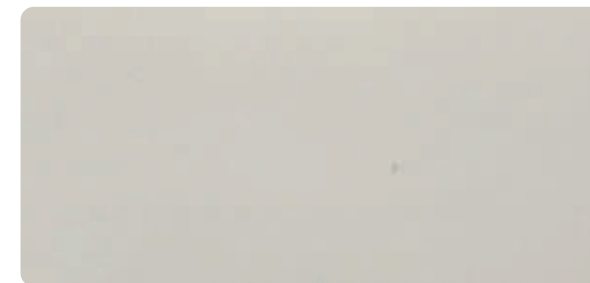
ATS 05 CEMENT



ATS 02 TULA ROSA WHITE SAND



ATS 03 BASKA BEACH SAND



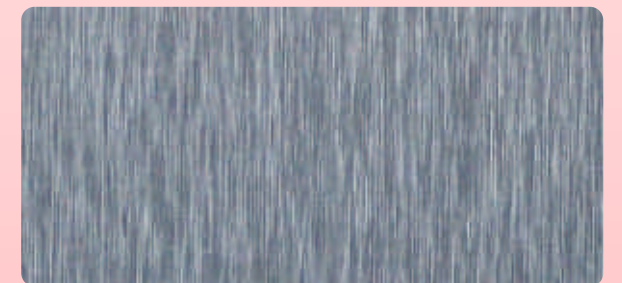
ATS 04 SILK GREY



AT 50 SILVER MIRROR



AT 51 GOLD MIRROR



AT 60 BRUSH SILVER

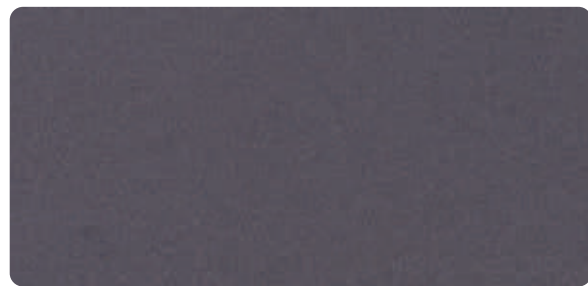


FLUTING

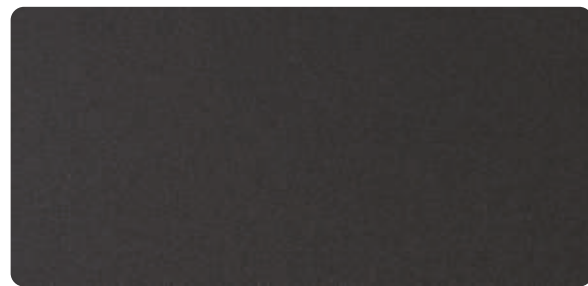
INTERLOCKING LOUVERS



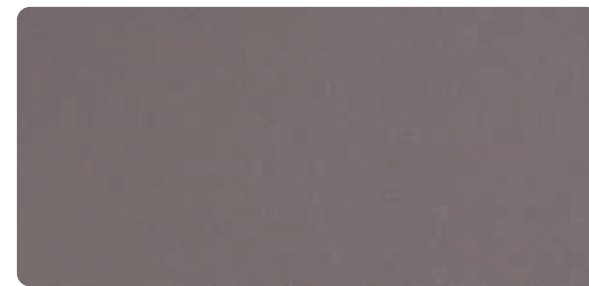
SAND SERIES



ATE 01 NIGHT GREY SAND



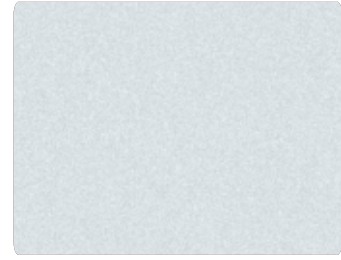
ATE 02 DARK GREY SAND



ATE 03 LIGHT MOON SAND



ATE 05 RED WINE SAND



AT 01 BRIGHT SILVER •



AT 02 METALLIC SILVER



AT 04 CHAMPAGNE GOLD



AT 05 PURE WHITE •



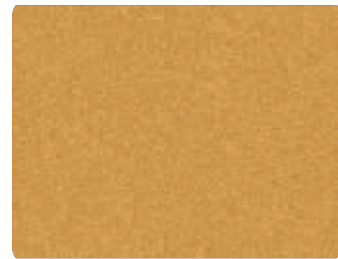
AT 07 CLASSIC GOLD •



AT 08 BRIGHT RED •



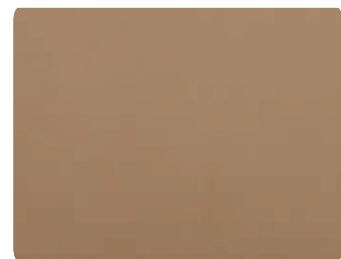
AT 10 SIGNAL BLUE



AT 11 COPPER METALLIC



AT 12 BLACK •



AT 14 COPPER PENNY



AT 15 PEARL COPPER



AT 18 NAVY BLUE



AT 19 TRAFFIC YELLOW



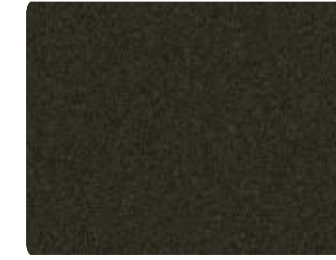
AT 20 PURE YELLOW



AT 22 BURGUNDY •



AT 25 REFRESHING ORANGE



AT 26 SILVER BLACK •



AT 28 METALLIC BLUE •



AT 31 OFF WHITE •



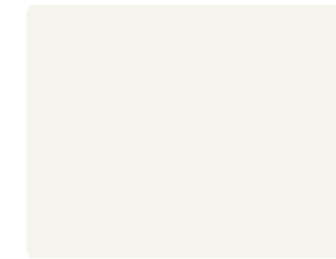
AT 32 COPPER BRONZE •



AT 33 CHOCOLATE BROWN



AT 34 COFFEE SILVER



AT 35 GLOSSY WHITE •



AT 36 SAMSUNG BLUE •



AT 41 BRIGHT GREEN •



AT 43 SLATE GREY



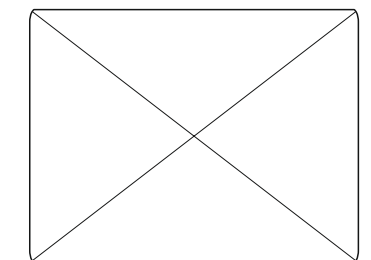
AT 46 GLOSSY BLACK



AT 53 DARK BRONZE



AT 54 GLOSSY RED



NEW ARRIVAL

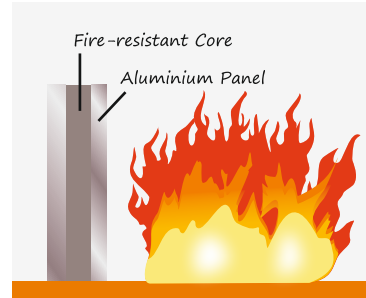
BOLD & SOLID

BOLD & SOLID

Fire Grade HPL/ACP

Fire-retardant (FR) materials have become an ingredient in modern construction. With more and more skyscrapers towering towards the skies in bustling cities, fire protection has taken center stage across the world. Using Genuine FR material is critical to safety in the Fire Rated Construction System.

A typical ACP-clad facade in India has a frame structure comprising a non-load-bearing brick wall, followed by plaster, steel frame and an ACP envelope fixed on the frame. As an important criterion for resistance to fire, the ACP envelope should contain fire and retain its structural integrity up to 2 hours. But that's not the only feature that contributes to fire protection. An authentic rating for resistance to fire also takes into account that smoke kills faster than fire, among other vital factors. This is where Alutuff FR ACP- Fireshield stands above the rest.



The Core Secret

Fireshield is a non-halogenated FR material that produces water vapour when its heat up. It does not produce toxic gases like the halogenated materials. Magnesium Hydroxide (MDH) is the non-halogenated material that is mixed with PE to form the core of Alutuff FR products. MDH has a better fire-resistance performance than Aluminium Trihydrate (ATH), transformation from solid to plastic (the point of ignition) up to 360, by releasing water molecules and bringing down the temperature continuously.

Core Details	Polyethylene	Magnesium Hydroxide (MDH)	Aluminium Trihydrate (ATH)
Chemical reaction	$CH_2 + O_2 = CO_2 + H_2O$	$Mg(OH)_2 = MgO + H_2O$	$2Al(OH)_3 = Al_2O_3 + 3H_2O$
Decomposition temperature	90oC to 110oC	310oC to 360oC	190oC to 240oC
Status	Heat generation	Heat absorption	Heat absorption

The State of the Art FR Grade ACP Production Unit.

Alutuff the end-to-end production facility is fireproof and completes with global standards. The one production unit, spread over 25,000 sqm at Bareilly, is equipped with up-to-date technology and testing facilities. The stringent quality control system keeps a sharp eye on each and every unit process.

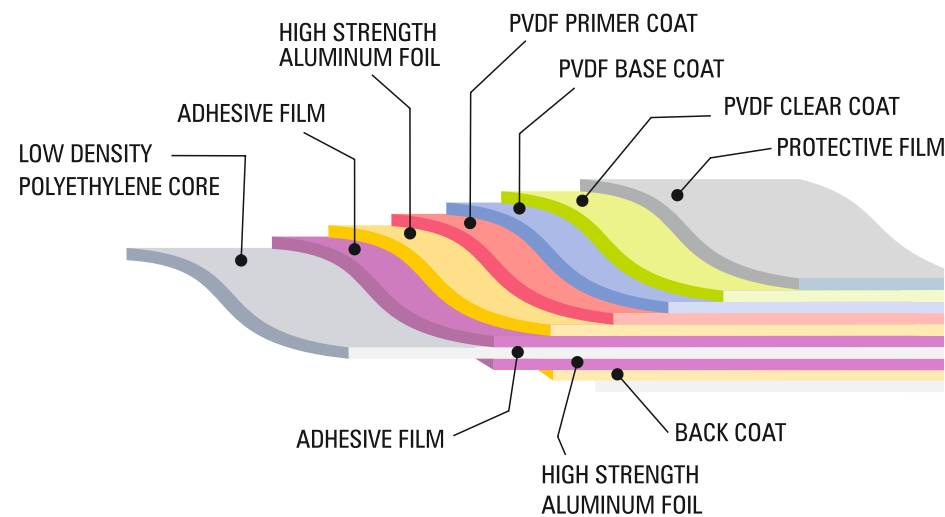
The Trusted Choice

Alutuff Fireshield having more than 71% mineral content and made with AA5005/AA3105 alloy, is a tried and tested non-halogenated FR ACP which :

Will not produce toxic gases that cause death. 80% of death in a fire accident is caused by smoke which is a dreadful combination of CO and Co2.

Will not blur vision and thus make it easy for people to get out via the escape routes.

Will not release excessive heat onto other materials that can cause fire.



Specifications

GRADE	TOTAL THICKNESS	FRONT COIL THICKNESS	CORE THICKNESS / TYPE	BACK COIL THICKNESS	COATING	APPLICATION
PREMIUM	4 MM	0.50	HIGH GRADE POLYMER/LDPE	0.50 MM	PVDF	EXTERIOR
PREMIUM	4 MM	0.25		0.25 MM	PVDF	EXTERIOR
CLASSIC	3 MM	0.25		0.25 MM	PVDF	EXTERIOR
FR	4 MM	0.50	3 MM / Mg (OH) 2 & or Al (OH) 3	0.50 MM	PVDF	EXTERIOR
FR	4 MM	0.25		0.25 MM	PVDF	EXTERIOR

Sizes : Width - 915 mm, 1240 mm & 1525 mm
(Length can be customized as per requirement)

Alloy 3003 series

Custom Specifications

We design panels in strict accordance with your imagination and your demands. We brainstorm, create, innovate, customize and construct panels of your choice. We combine different attributes and sizes, following your wish and hence, minimize wastage. We pay attention to all of your demands.

- Color, Size and Composition
- Different Aluminium Grades
- Different PE Grades
- Unconventional Widths

